

McKinney Trade Center - Building III

310 Wilmeth Road, McKinney, TX



OWNED & DEVELOPED BY

ML REALTY
PARTNERS

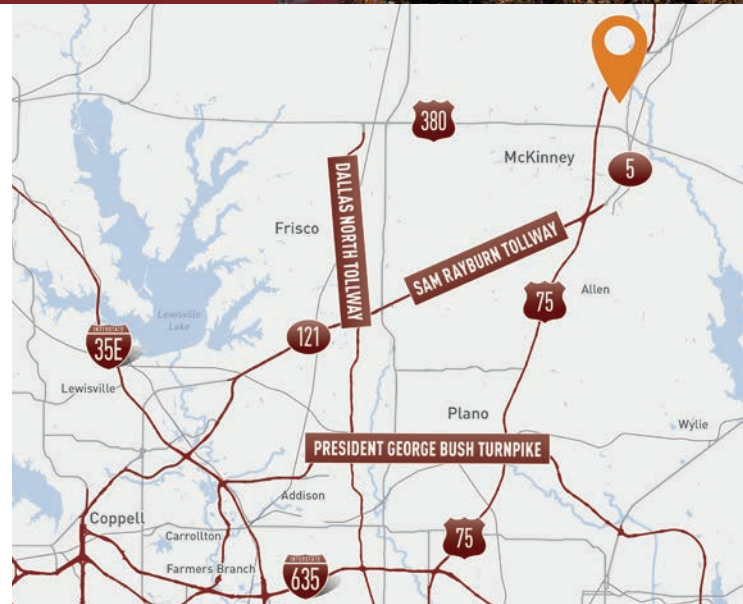


UP TO 111,651 SF AVAILABLE

MCKINNEY TRADE CENTER

Building Specifications

| | |
|-------------------|--|
| Building Size: | 111,651 SF |
| Available: | 22,880-111,651 SF |
| Office: | Build-to-Suit |
| Clear Height: | 32' Clear |
| Loading: | 25 Dock High Doors (9'x10') |
| Drive In Doors: | 2 Ramped (14'x14') |
| Car Parking: | 158 Spaces |
| Truck Court: | 200' (Shared) |
| Column Spacing: | 52' x 53'-4" (Typical), with a 60' Speed Bay |
| Sprinkler System: | ESFR |
| Roof: | TPO (Minimum R 20.5) |



For More Information Contact



KEN WESSON, SIOR

469-855-5222

kwesson@lee-associates.com

ADAM GRAHAM, SIOR

214-335-3320

agraham@lee-associates.com

Building Features

- › Immediate access to Highway 5
- › 3 minutes to interchange at Highway 380 and I-75
- › Close proximity to McKinney National Airport
- › Roof fans and wall louvers provide ± 1.6 air changes per hour

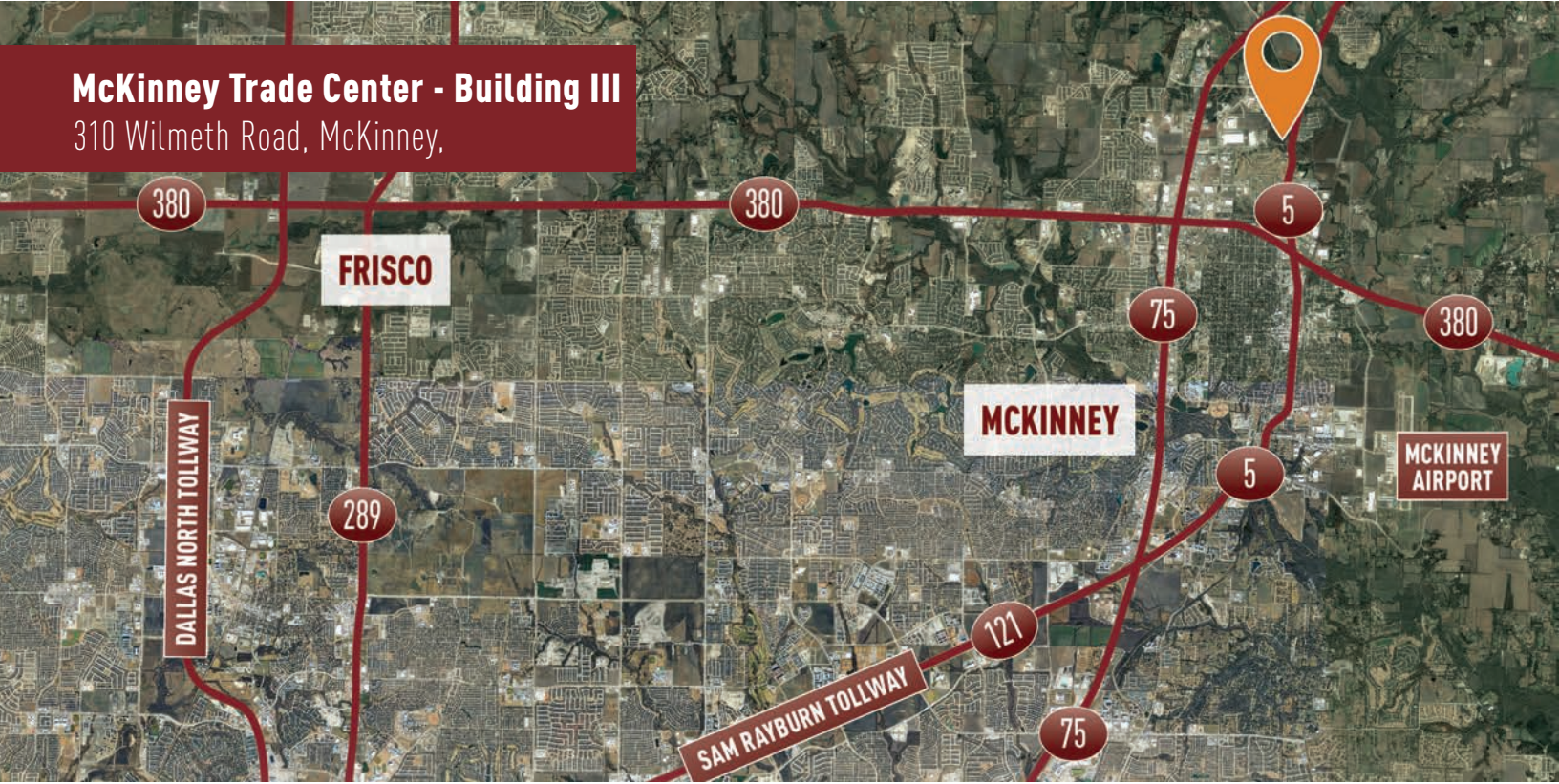
Owner:

ML Realty Partners \ 8150 N Central Expy, Suite M-2030, Dallas, TX 75206 \ 214-389-1155

Information contained herein is subject to change and verification, and no liability for errors or omissions is assumed. © 2020 All Rights Reserved. ML Realty Partners

McKinney Trade Center - Building III

310 Wilmeth Road, McKinney,



Master Plan Rendering



ML REALTY
PARTNERS

ML Realty Partners \ 8150 N Central Expy, Suite M-2030, Dallas, TX 75206 \ 214-389-1155

Information contained herein is subject to change and verification, and no liability for errors or omissions is assumed. © 2020 All Rights Reserved. ML Realty Partners