

400 N Ashland Ave



**HIGHLY VISIBLE,
GENERATIONAL
LEASING
OPPORTUNITY**



 **TAKE VIRTUAL TOUR**

**20,520
SQ FT**

**AMPLE PARKING &
OUTDOOR STORAGE**

**±2.41
ACRES**

**AVAILABLE FOR LEASE IN
CHICAGO'S KINZIE CORRIDOR**

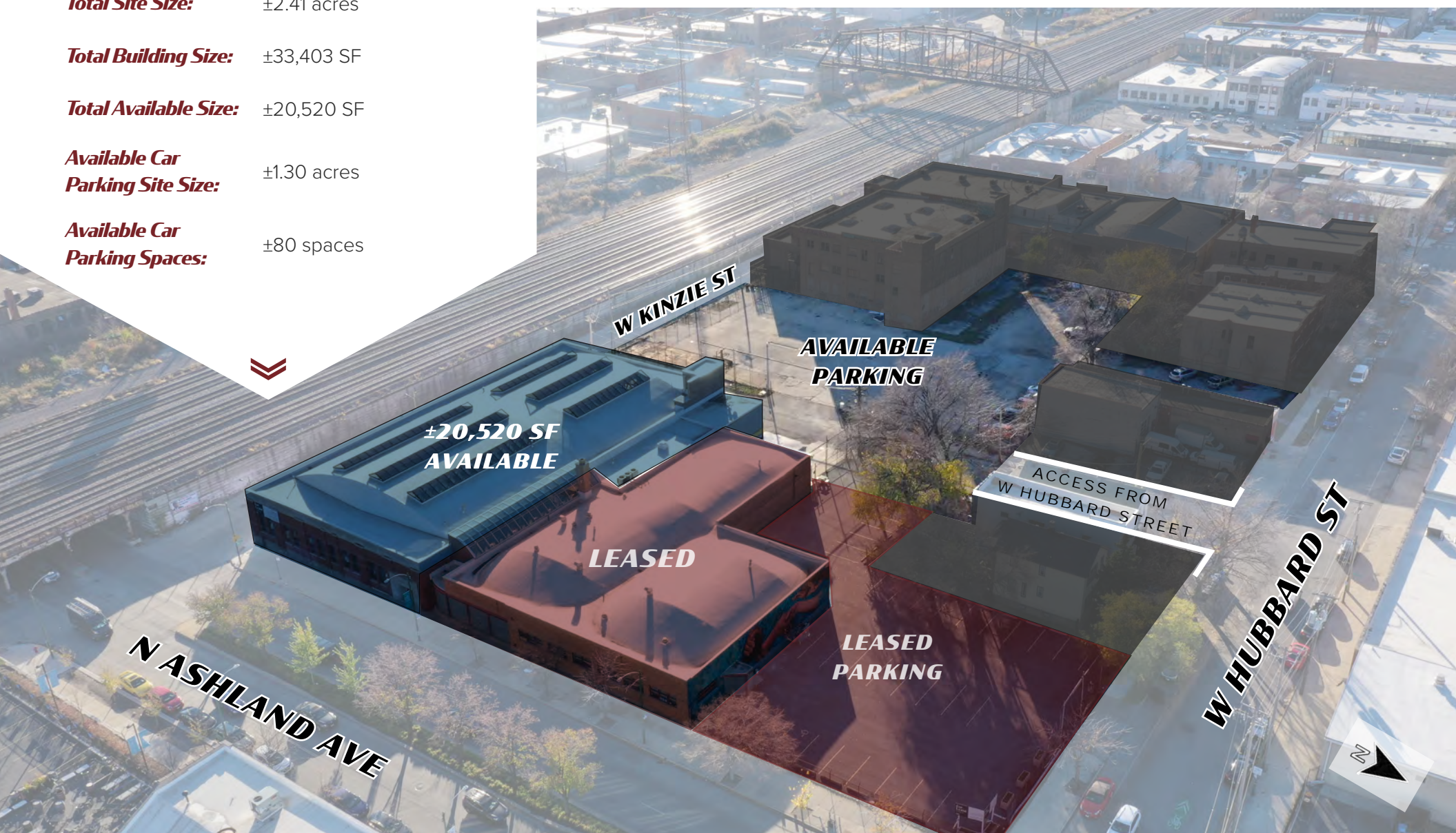
 **ML REALTY
PARTNERS**

CBRE

UNMATCHED ASHLAND AVENUE VISIBILITY WITH ±80 CAR PARKING



- Total Site Size:** ±2.41 acres
- Total Building Size:** ±33,403 SF
- Total Available Size:** ±20,520 SF
- Available Car Parking Site Size:** ±1.30 acres
- Available Car Parking Spaces:** ±80 spaces



±20,520 SF
AVAILABLE

LEASED

AVAILABLE
PARKING

LEASED
PARKING

ACCESS FROM
W HUBBARD STREET

N ASHLAND AVE

W KINZIE ST

W HUBBARD ST





Total Building Size:	±33,403 SF
Total Site Size:	±2.41 acres
Total Available Size:	±20,520 SF
Existing Office Space:	±2,100 SF
Clear Height:	13'2" - 14'6"
Loading:	2 interior docks
Secured Parking:	±80 spaces
Asking Lease Rate:	Subject to offer

Ideal for



Last Mile Ecommerce



Headquarters



Lab & Life Sciences



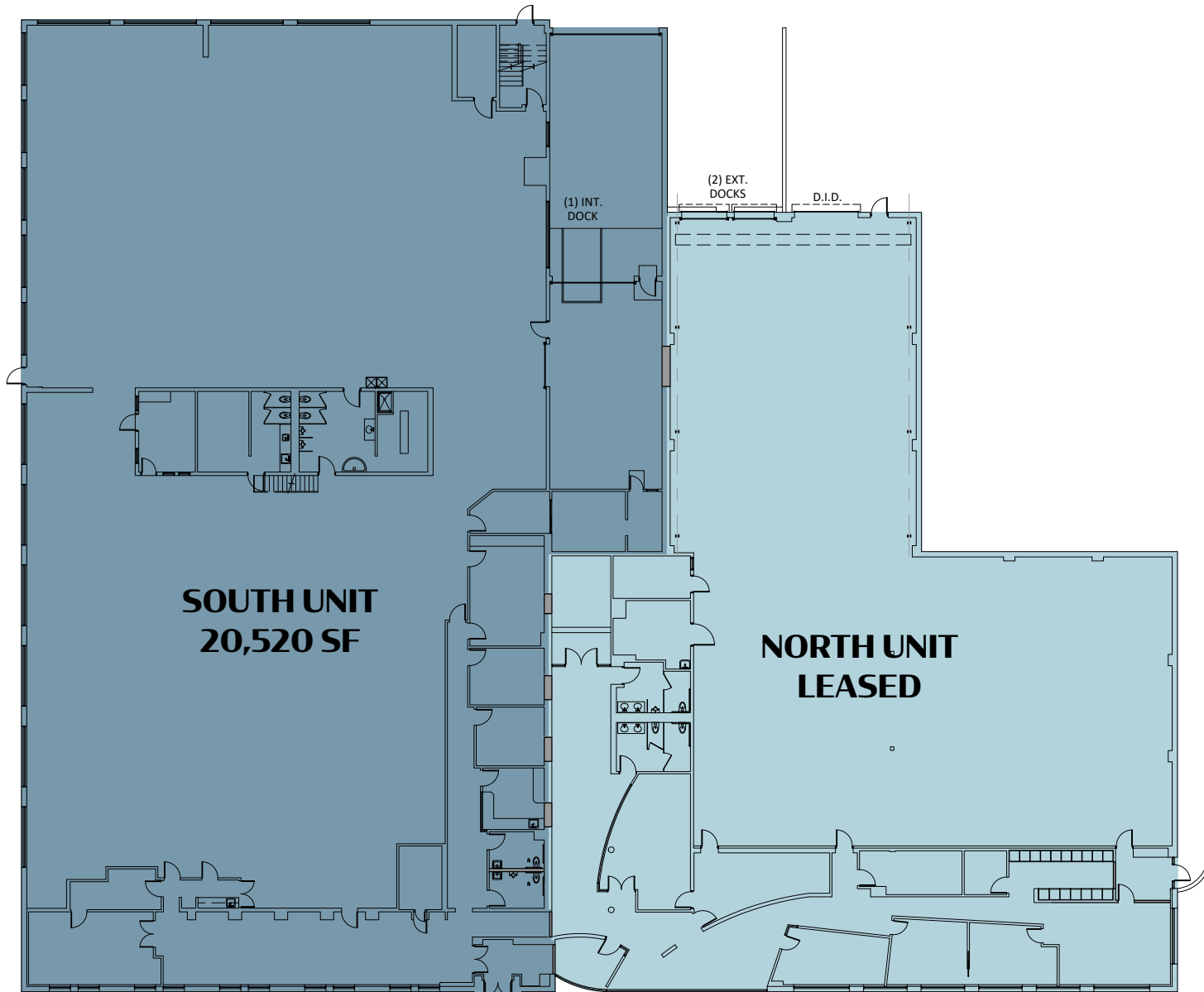
High Tech Manufacturing



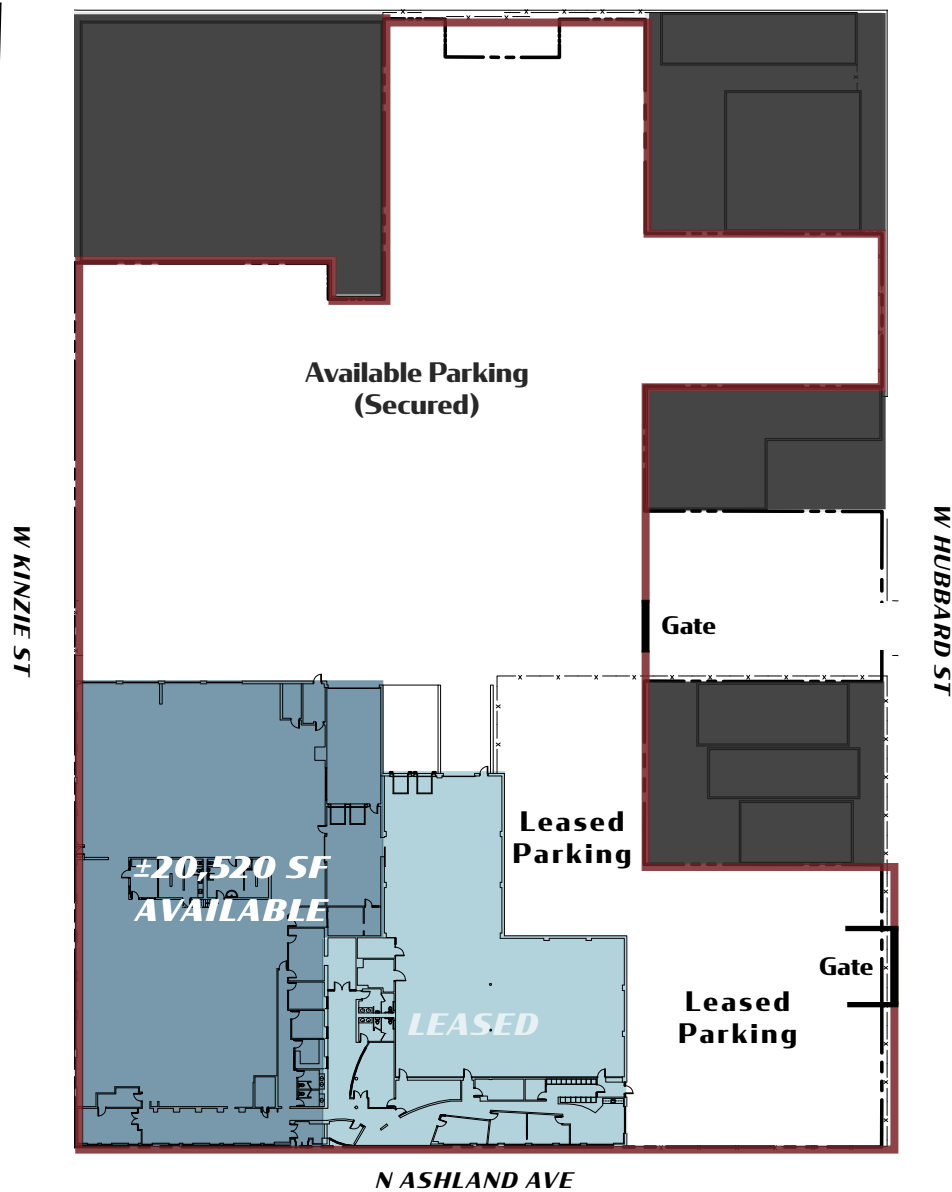
Showroom/Creative



Ghost Kitchens



METRA
MILWAUKEE
DISTRICT
NORTH LINE
(MDN)



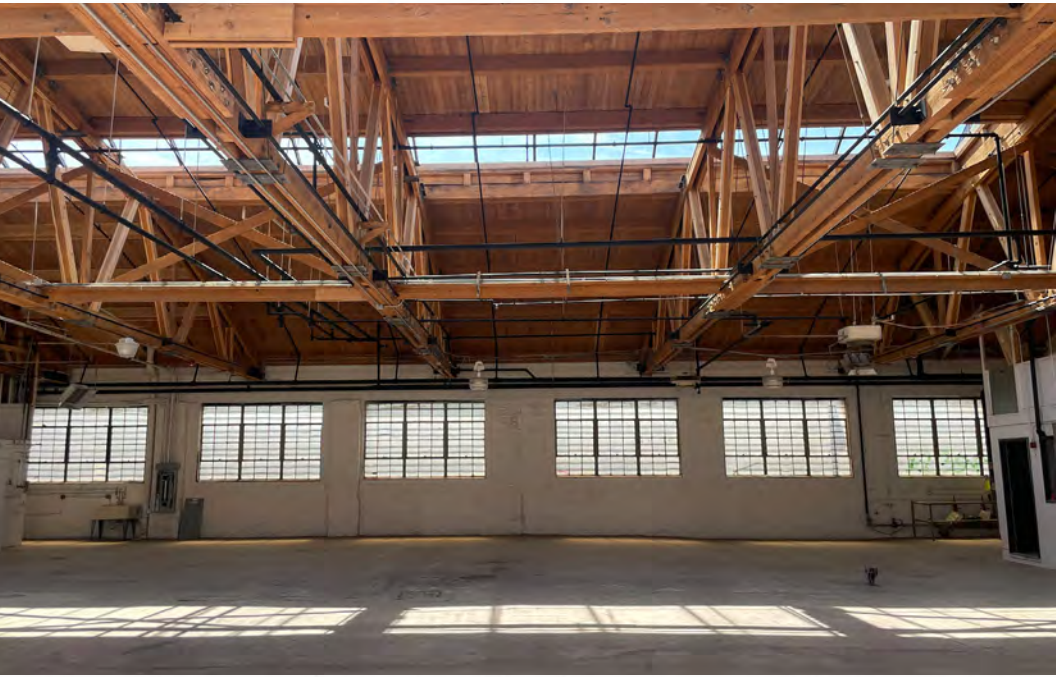
NEWLY RENOVATED

- New Roof
- New Skylights
- Sandblasted Wood Trusses & Ceiling
- Reinforced Bow-truss
- Painted Warehouse
- Parking Lot Paved & Striped

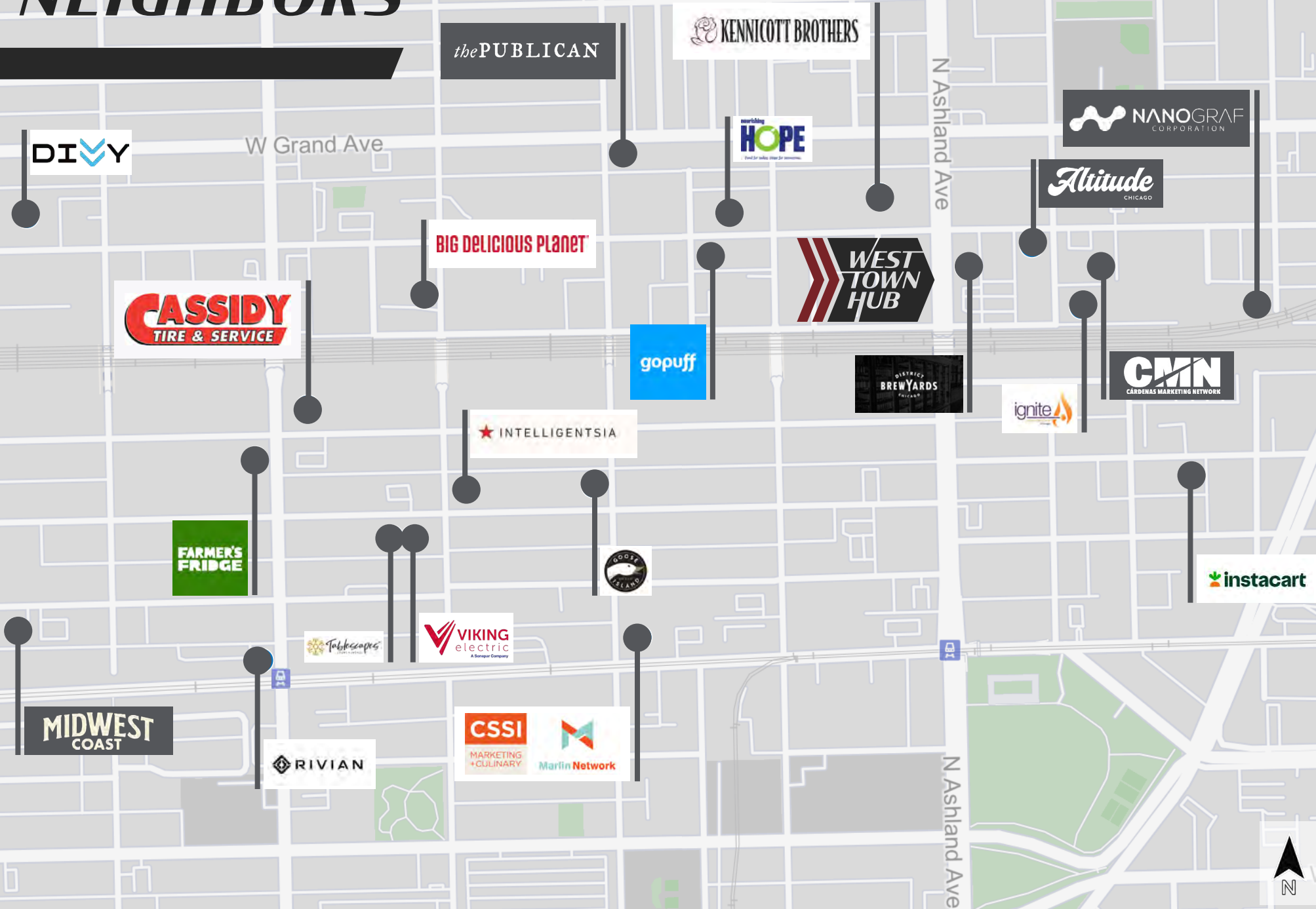


CREATIVE SPACE
WITH ABUNDANT
NATURAL LIGHT

**BRICK & TIMBER BUILDING WITH
EXCELLENT NATURAL LIGHT**



MEET THE NEIGHBORS



ACCESS & AMENITIES

- | | |
|--|----------------------------------|
| 1 Starbucks | 25 The Aviary |
| 2 Target | 26 Swift & Sons |
| 3 McDonald's | 27 Kuma's Corner West Loop |
| 4 Starbucks | 28 Aba |
| 5 Walgreen's | 29 The Aberdeen Tap |
| 6 Jet's Pizza | 30 Goose Island Taproom |
| 7 Ranalli's | 31 District Brew Yards |
| 8 Palace Grill | 32 On Tour Brewing |
| 9 The Billy Goat Tavern | 33 CVS |
| 10 McDonald's | 34 D'Agostino's Pizza River West |
| 11 Dunkin' Donuts | 35 Big Shoulders Coffee |
| 12 Shake Shack | 36 Rose Mary |
| 13 Sweetgreen | 37 Time Out Market |
| 14 The Loyalist | 38 Lyra |
| 15 City Winery | 39 Cira |
| 16 The Corned Beef Factory Sandwich Shop | 40 JP Graziano |
| 17 Federales | 41 Breakfast House |
| 18 Bar Siena | 42 Tempesta Market |
| 19 Little Goat Diner | 43 Big Star Mariscos |
| 20 Au Cheval | 44 Cobra Lounge |
| 21 La Josie | 45 Great Central Brewing Co |
| 22 Limitless Coffee & Tea | 46 Kaiser Tiger |
| 23 Duck Duck Goat | 47 Ever |
| 24 Bar Takito | 48 Elina's |
| | 49 Coalfire |

WEST TOWN

RIVER WEST

1.2 MILES TO I-90/I-94

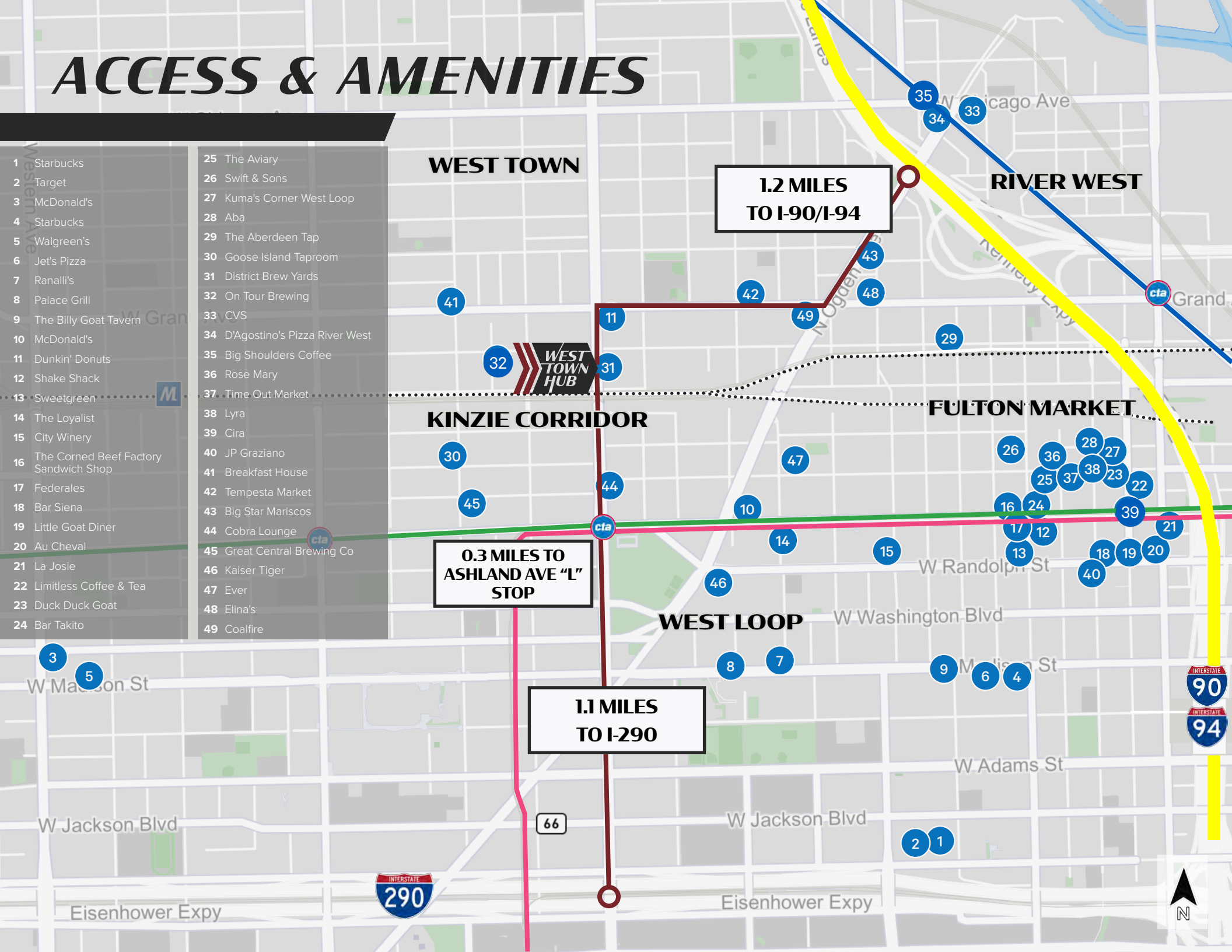
KINZIE CORRIDOR

FULTON MARKET

0.3 MILES TO ASHLAND AVE "L" STOP

WEST LOOP

1.1 MILES TO I-290



400 N Ashland Avenue

**LARRY
GOLDWASSER, SIOR**

Executive Vice President
+1 312 334 7201
larry.goldwasser@cbre.com

**MATT
COWIE**

First Vice President
+1 312 334 7203
matt.cowie@cbre.com

**JOHN
MARKS**

Senior Associate
+1 312 334 7204
john.marks@cbre.com

CBRE



©2024 CBRE, Inc. All rights reserved. This information has been obtained from sources believed reliable, but has not been verified for accuracy or completeness. You should conduct a careful, independent investigation of the property and verify all information. Any reliance on this information is solely at your own risk. CBRE and the CBRE logo are service marks of CBRE, Inc. All other marks displayed on this document are the property of their respective owners, and the use of such logos does not imply any affiliation with or endorsement of CBRE. Photos herein are the property of their respective owners. Use of these images without the express written consent of the owner is prohibited. PMStudio_January2023