

CHICAGO, IL

400 N. ASHLAND AVENUE



ML REALTY
PARTNERS

HIGHLY VISIBLE, GENERATIONAL LEASING OPPORTUNITY



AVAILABLE PARKING
(SECURED)

ADDITIONAL
PARKING

±20,520 SF
AVAILABLE

HUBBARD STREET

ASHLAND AVENUE

20,520 SF | ±1.70 ACRES

SIGNIFICANT PARKING &
OUTDOOR STORAGE

AVAILABLE FOR LEASE IN
CHICAGO'S KINZIE CORRIDOR



SCAN QR CODE
TO WATCH VIDEO



HUBBARD STREET

ASHLAND AVENUE

METRA MILWAUKEE DISTRICT
NORTH LINE (MD-N)

SITE HIGHLIGHTS

TOTAL SITE SIZE ±2.41 Acres

TOTAL BUILDING SIZE ±33,403 SF

TOTAL AVAILABLE SIZE ±20,520 SF

**AVAILABLE
PARKING SITE SIZE** ±1.30 Acres

WARD 37th

ALDERMAN Walter Burnett Jr.

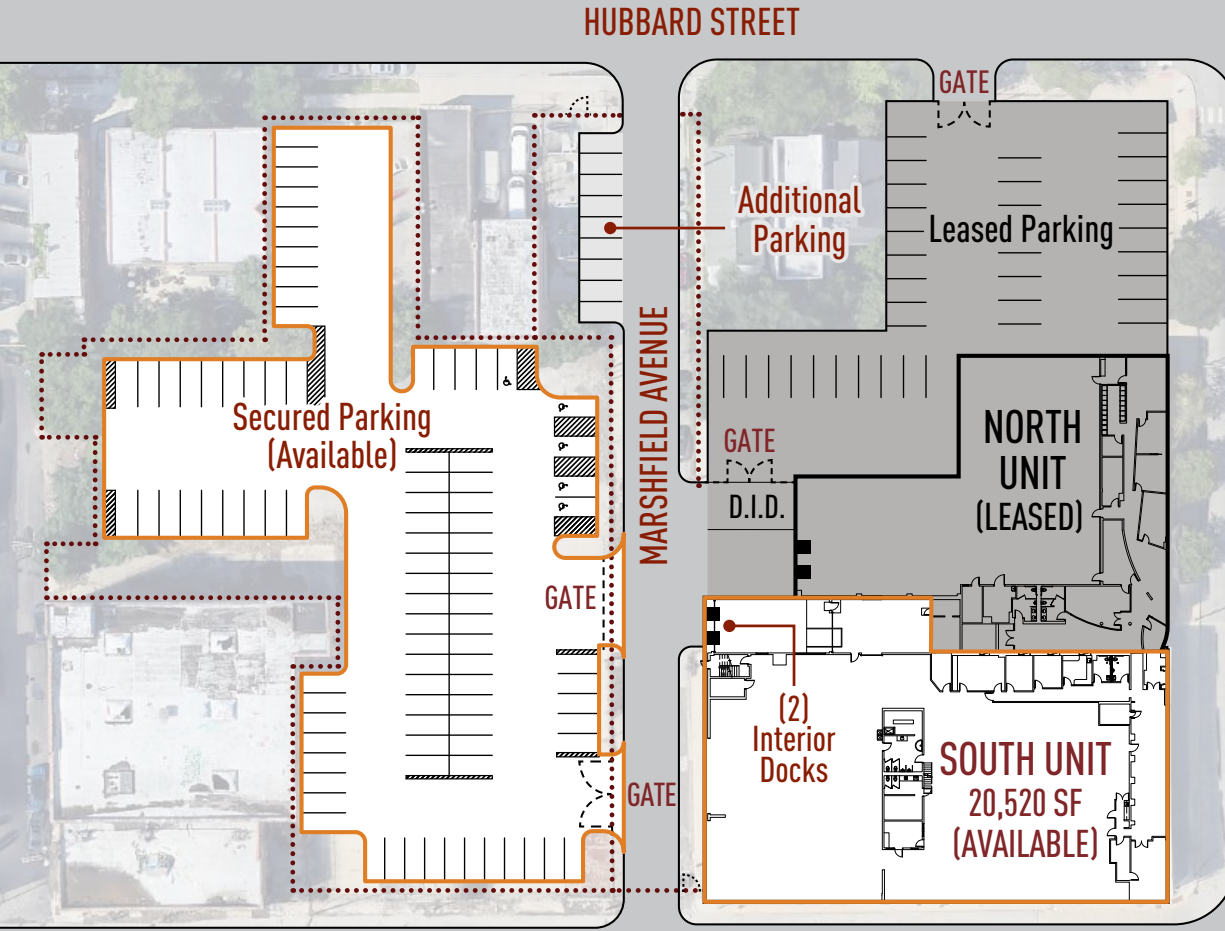


BUILDING HIGHLIGHTS

TOTAL BUILDING SIZE	±33,403 SF
TOTAL AVAILABLE SIZE	±20,520 SF
EXISTING OFFICE SPACE	±2,100 SF
CLEAR HEIGHT	13'2" – 14'6"
LOADING	2 Interior Docks
POWER	400 Amps - 120/240V
SECURED PARKING	±102 Spaces
ASKING LEASE RATE	Subject to Offer

IDEAL FOR:

- ✓ LAST MILE E-COMMERCE
- ✓ HEADQUARTERS
- ✓ LAB & LIFE SCIENCES
- ✓ HIGH TECH MANUFACTURING
- ✓ SHOWROOM/CREATIVE
- ✓ HOSPITALITY



NEWLY RENOVATED

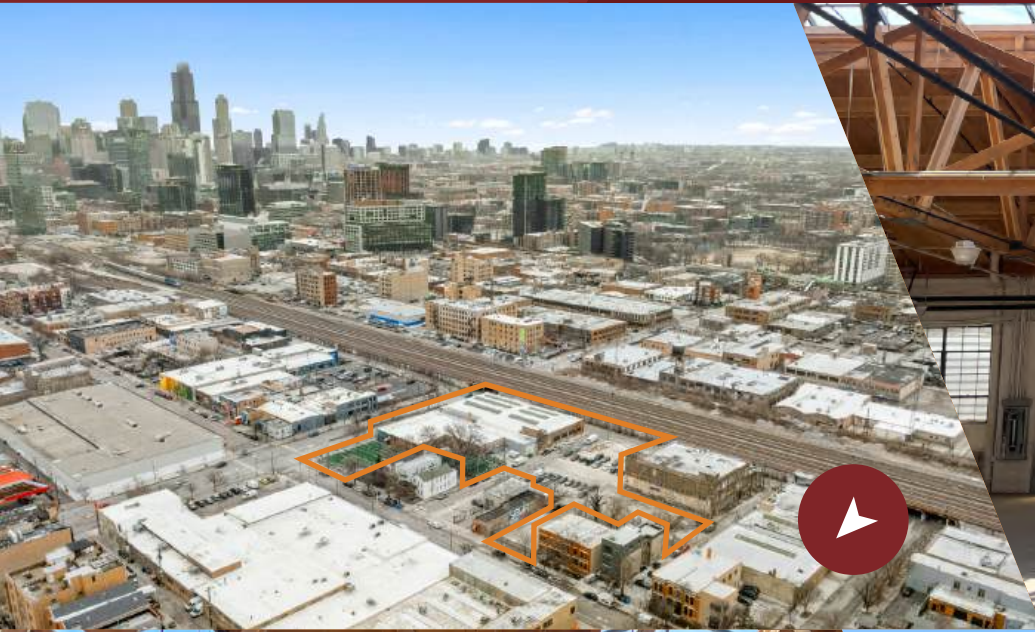
- ✓ NEW ROOF
- ✓ NEW SKYLIGHTS
- ✓ SANDBLASTED WOOD TRUSSES & CEILING
- ✓ PARKING LOT REPAVED
- ✓ REINFORCED BOW-TRUSS
- ✓ UPGRADED WAREHOUSE
- ✓ SECURE PARKING / STORAGE LOT



METRA MILWAUKEE DISTRICT NORTH LINE (MD-N)

NORTH ↑

BRICK & TIMBER DESIGN WITH EXCELLENT NATURAL LIGHT





West Town

400 Ashland Avenue

River West

Kinzie Corridor

Fulton Market

Chicago Central
Business District

West Loop



- 1.2 MILES - I-90 / I-94
- 1.1 MILES - I-290
- 0.3 MILES - ASHLAND AVE "L" STOP



ALEX SUTTERER

630.693.0644
asutterer@hiffman.com

PACKY DOYLE

630.691.0601
pdoyle@hiffman.com

PATRICK CLIFFORD

630.317.0753
pclifford@hiffman.com

400 ASHLAND AVENUE, CHICAGO, IL



ML REALTY
PARTNERS