

McKinney Trade Center - Building II

320 Wilmeth Road, McKinney, TX



OWNED & DEVELOPED BY

ML REALTY
PARTNERS

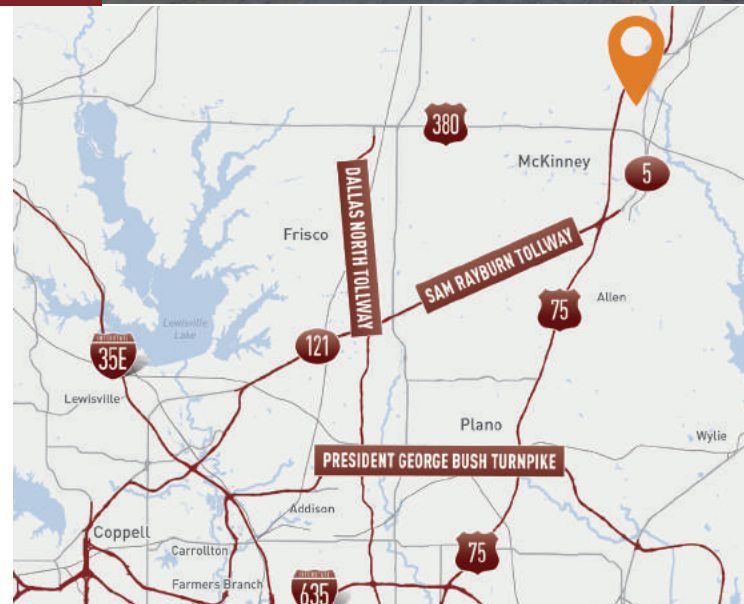


20,092 SF AVAILABLE

MCKINNEY TRADE CENTER

Building Specifications

Building Size:	95,849 SF
Available:	20,092 SF
Office:	3,148 SF
Clear Height:	32' Clear
Loading:	5 Dock High Doors (9'x10')
Drive In Doors:	1 Ramped (14'x14')
Car Parking:	Ample
Truck Court:	200' (Shared)
Column Spacing:	52' x 60' (Typical), with a 60' Speed Bay
Sprinkler System:	ESFR
Roof:	TPO (Minimum R 20.5)



For More Information Contact



KEN WESSON, SIOR

469-855-5222

kwesson@lee-associates.com

ADAM GRAHAM, SIOR

214-335-3320

agraham@lee-associates.com

Building Features

- › Immediate access to Highway 5
- › 3 minutes to interchange at Highway 380 and I-75
- › Close proximity to McKinney National Airport
- › Roof fans and wall louvers provide ± 1.9 air changes per hour

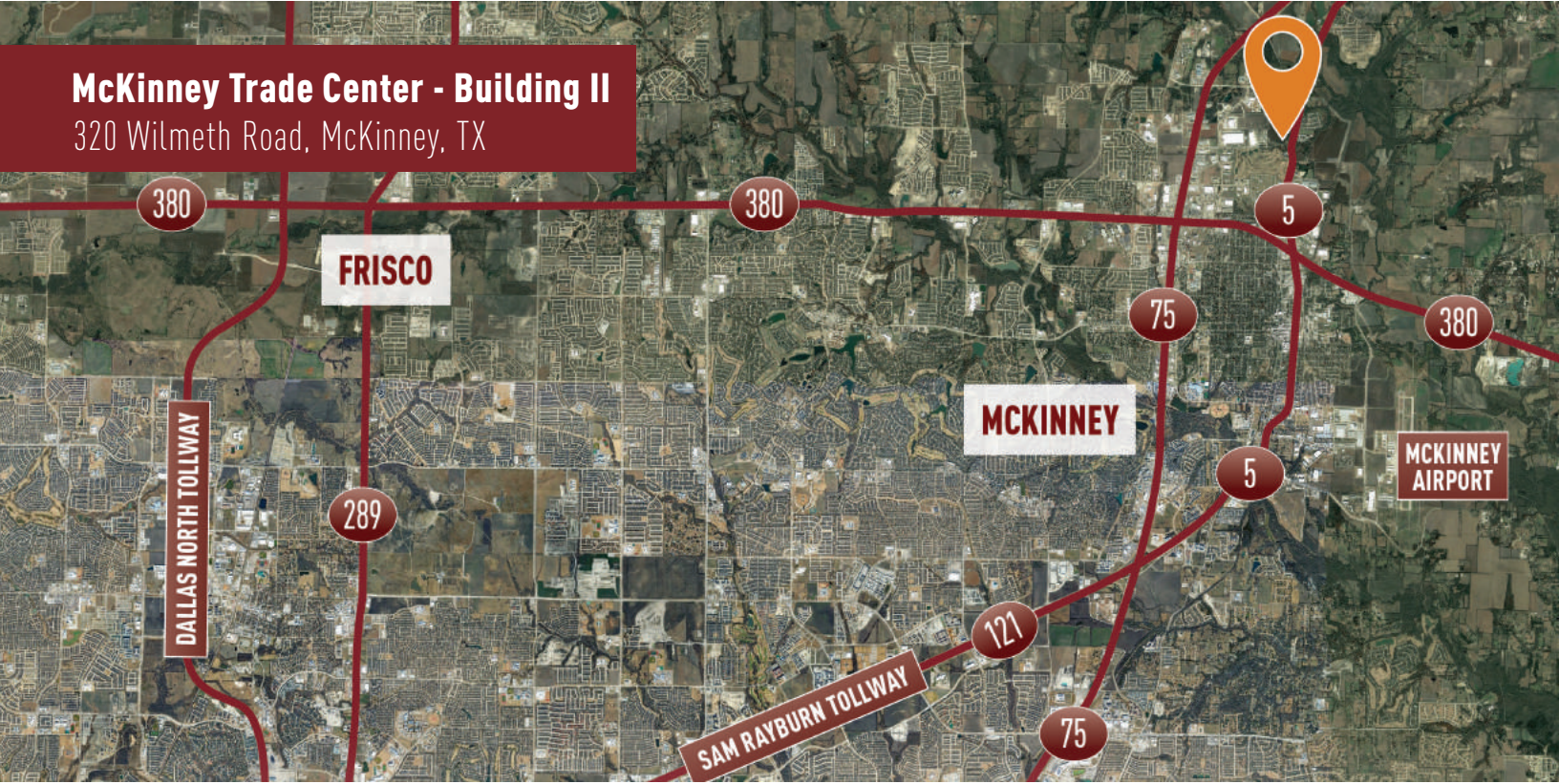
Owner:

ML Realty Partners \ 8150 N Central Expy, Suite M-2030, Dallas, TX 75206 \ 214-389-1155

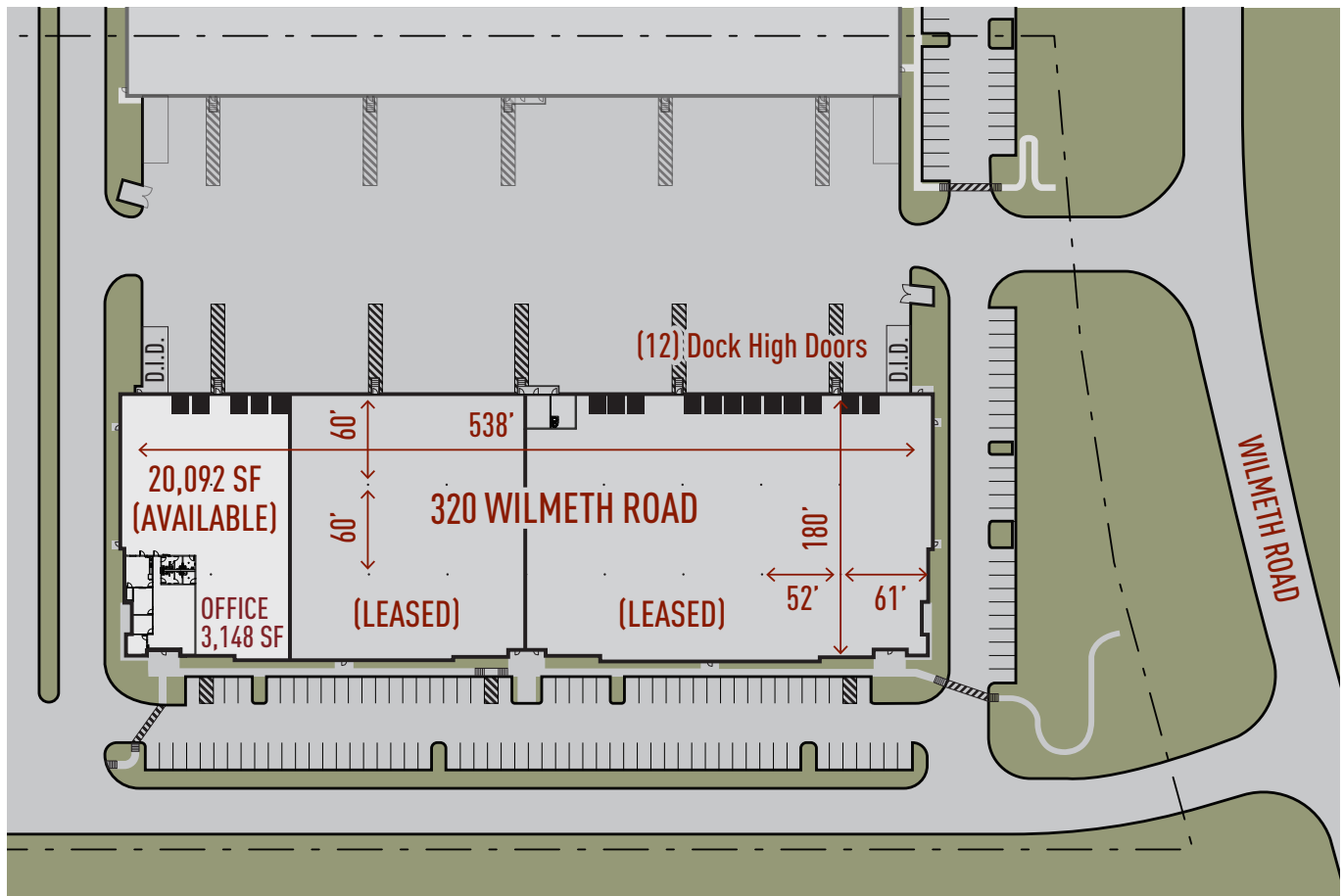
Information contained herein is subject to change and verification, and no liability for errors or omissions is assumed. © 2021 All Rights Reserved. ML Realty Partners

McKinney Trade Center - Building II

320 Wilmeth Road, McKinney, TX



Master Plan Rendering



ML REALTY
PARTNERS

← NORTH

ML Realty Partners \ 8150 N Central Expy, Suite M-2030, Dallas, TX 75206 \ 214-389-1155

Information contained herein is subject to change and verification, and no liability for errors or omissions is assumed. © 2021 All Rights Reserved. ML Realty Partners