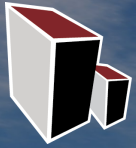


# BUILDING B

AT IL ROUTE 83/BUSSE ROAD & DEVON AVENUE | Bensenville, IL



OWNED & DEVELOPED BY  
**ML REALTY**  
PARTNERS



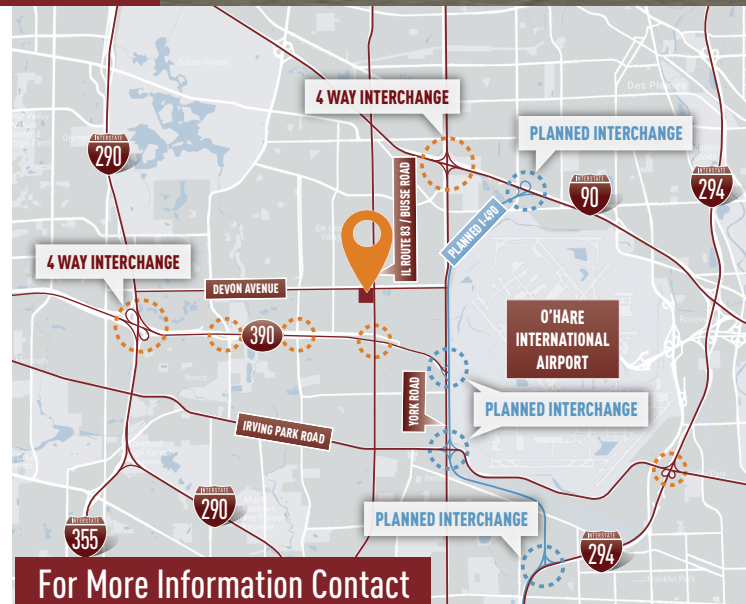
## ±297,600 SF AVAILABLE

### Building Specifications

Building Size:	±297,600 SF
Available:	±297,600 SF
Office:	Build-to-suit
Clear Height:	40' Clear
Loading:	±57 Exterior Docks
Drive In Doors:	±2
Electric:	4,000 Amps @ 480 Volts
Lighting:	LED
Car Parking:	±250 Spaces
Trailer Parking:	±67 Spaces
Column Spacing:	54' X 45'
Sprinkler System:	ESFR

### Building Features

- › **DuPage County taxes**
- › **On site trailer parking**
- › **40' clear**
- › Visibility on IL Route 83/Busse Road and Devon Avenue
- › Less than one-half mile north of I-390
- › 3 miles to O'Hare International Airport North Cargo Entrance
- › 3 miles to O'Hare International Airport South Cargo Entrance
- › 3.5 miles to I-290 via full interchange
- › Located at controlled intersection



For More Information Contact

**cawley** CHICAGO

**ANDREW MALETICH**

630-729-7942

[amaletich@cawleychicago.com](mailto:amaletich@cawleychicago.com)

**MATT GARLAND**

630-729-7945

[mgarland@cawleychicago.com](mailto:mgarland@cawleychicago.com)

**DUSTIN ALBERS**

630-735-8747

[dalbers@cawleychicago.com](mailto:dalbers@cawleychicago.com)

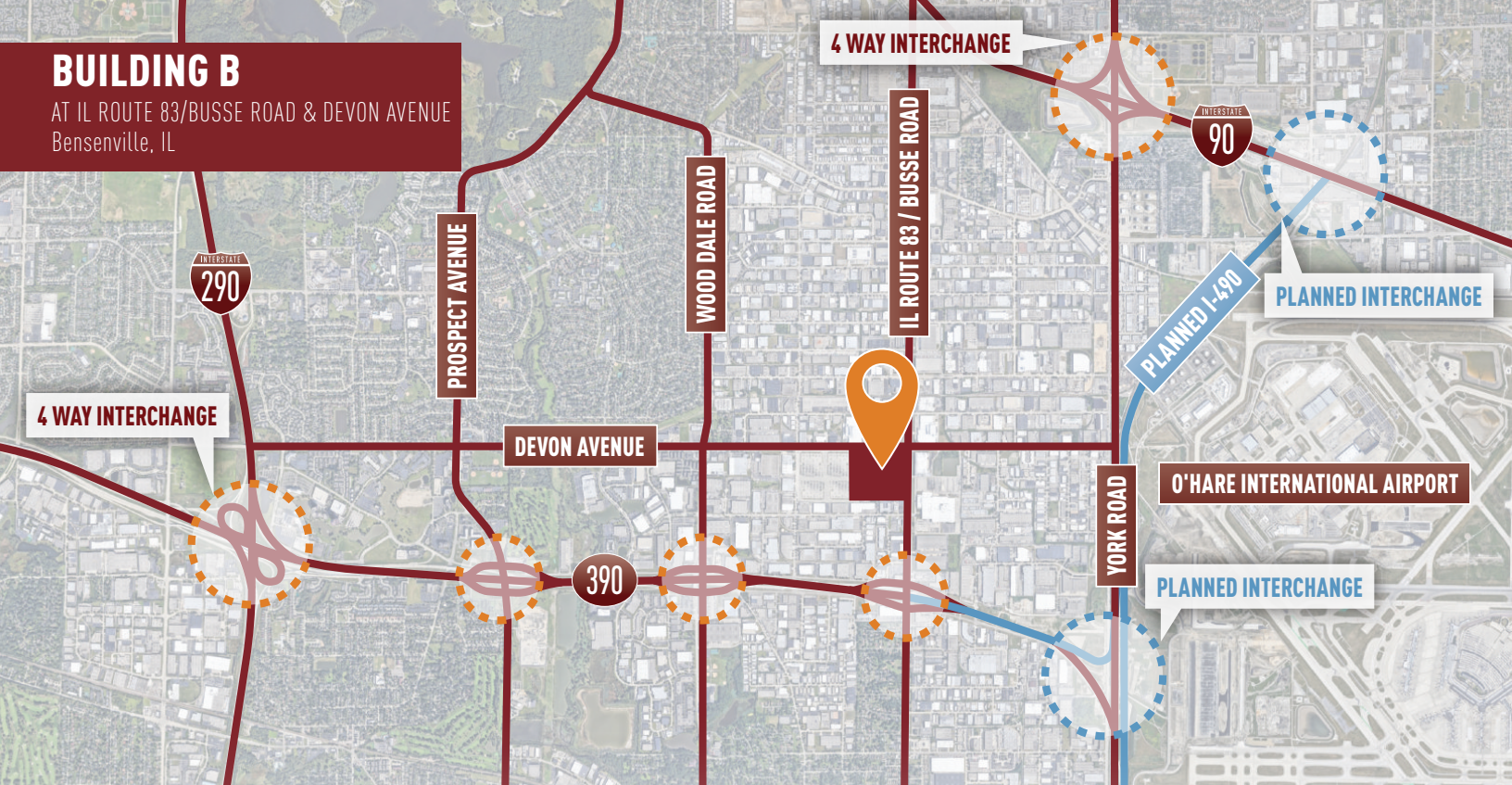
Owner:

ML Realty Partners \ One Pierce Place, Suite 450, Itasca, Illinois 60143 \ 630-250-2900

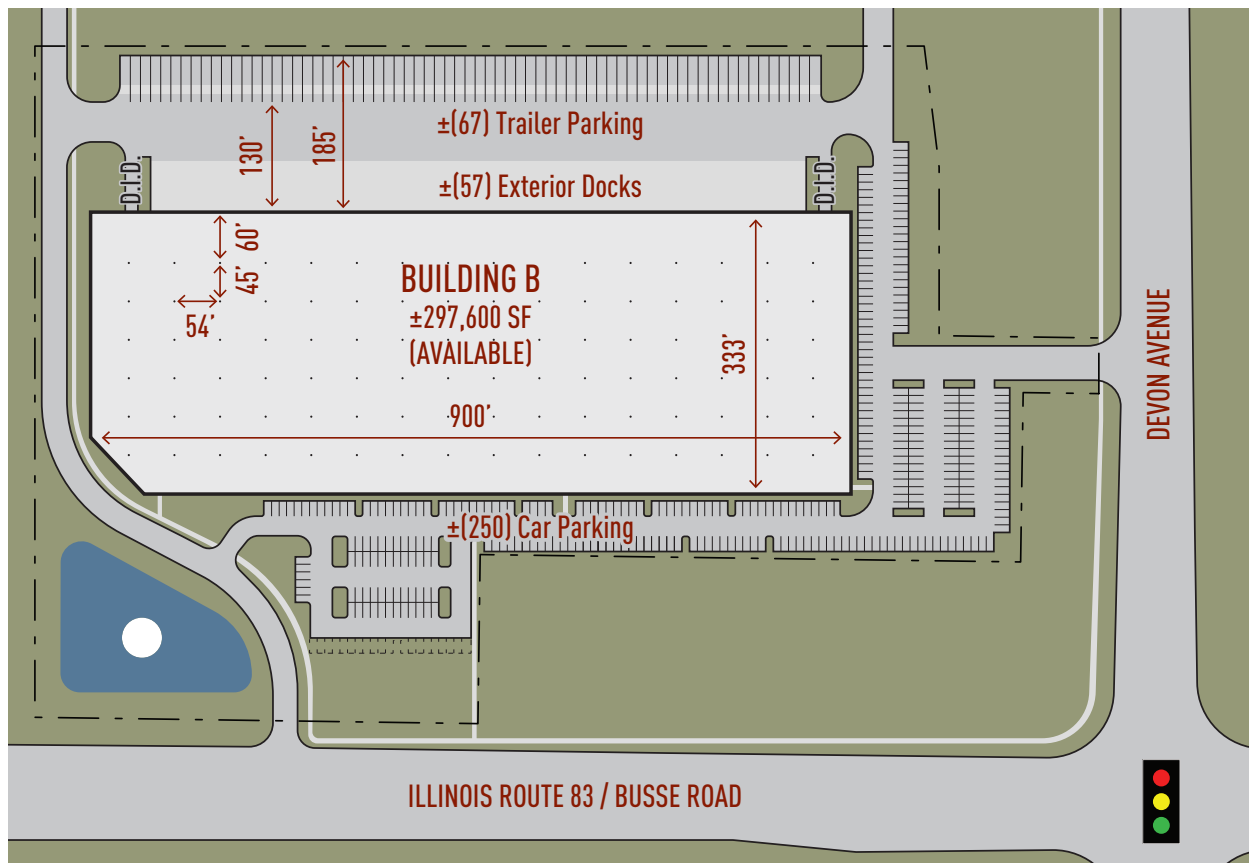
Information contained herein is subject to change and verification, and no liability for errors or omissions is assumed. © 2021 All Rights Reserved. ML Realty Partners

## BUILDING B

AT IL ROUTE 83/BUSSE ROAD & DEVON AVENUE  
Bensenville, IL



## Site Plan Rendering



**ML REALTY**  
PARTNERS

NORTH →

ML Realty Partners \ One Pierce Place, Suite 450, Itasca, Illinois 60143 \ 630-250-2900

Information contained herein is subject to change and verification, and no liability for errors or omissions is assumed. © 2021 All Rights Reserved. ML Realty Partners