

2601 Lively Boulevard, Elk Grove Village, IL



ML REALTY
PARTNERS



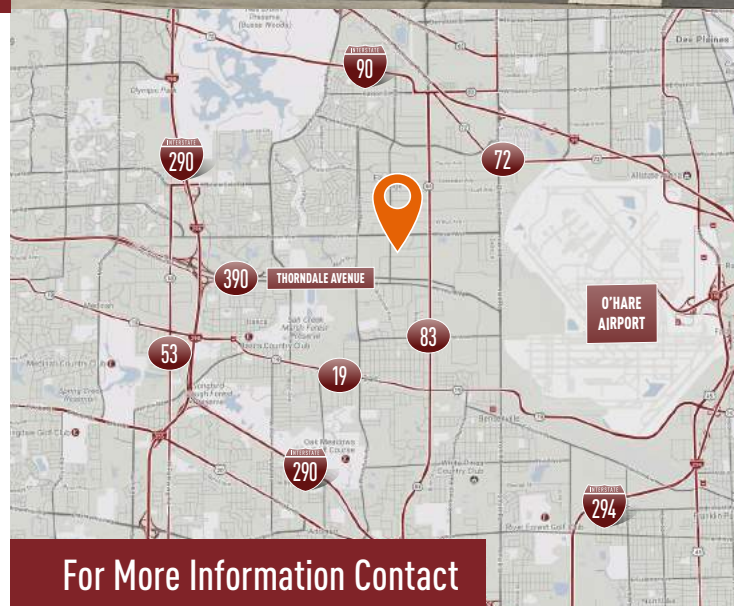
75,072 SF AVAILABLE

Building Specifications

Building Size:	75,072SF
Available:	75,072 SF
Office:	11,945 SF
Showroom:	2,709 SF
Clear Height:	22' Clear
Loading:	6 Interior Docks
Drive In Doors:	1
Electric:	1200 Amps @ 480 Volts
Auto Parking:	56 Spaces
Sprinkler System:	Wet
Lighting:	T5

Building Features

- › Close proximity to IL 390 and IL 83 / Busse Road
- › Signage available
- › **DuPage taxes in O'Hare market**



For More Information Contact



PHIL REIFF
773-458-1401
phil.reiff@am.jll.com

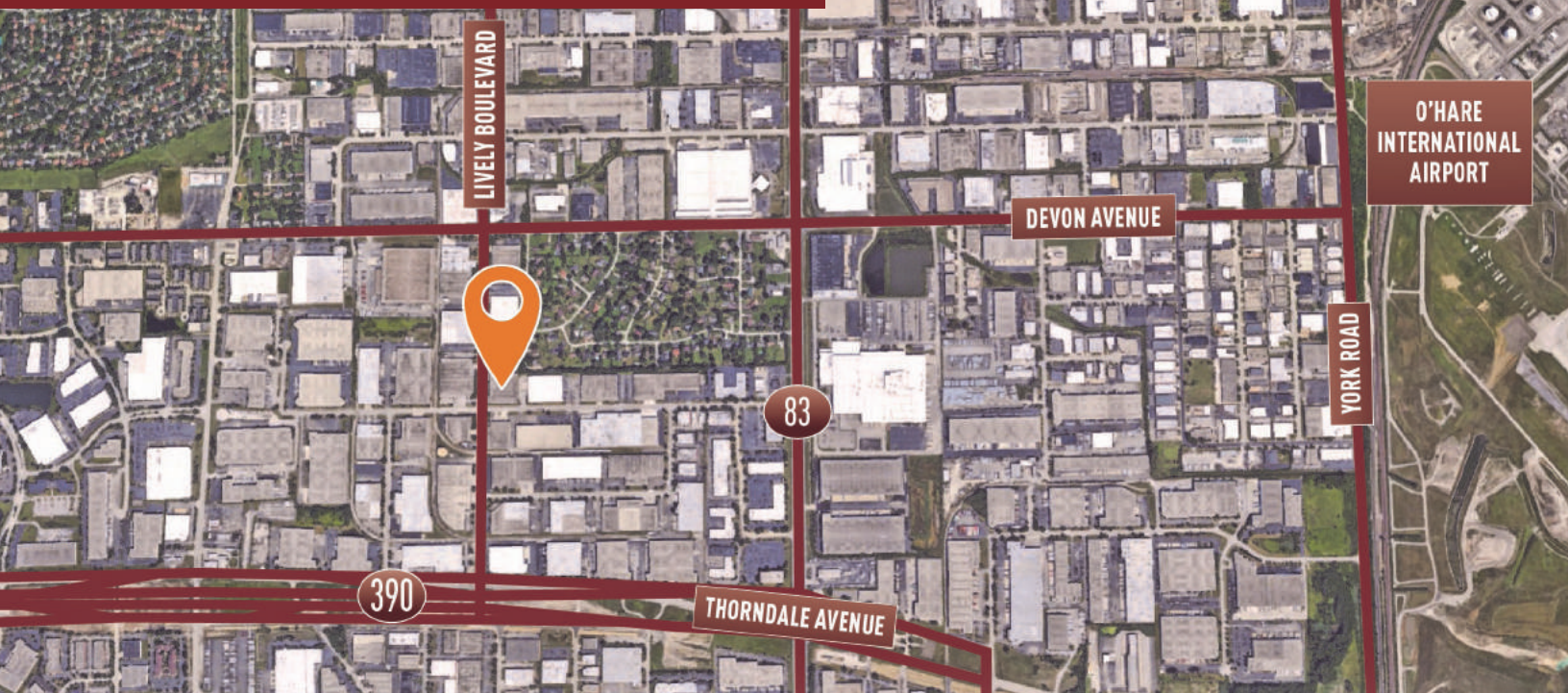
SAM DURKIN
773-458-1377
sam.durkin@am.jll.com

Owner:

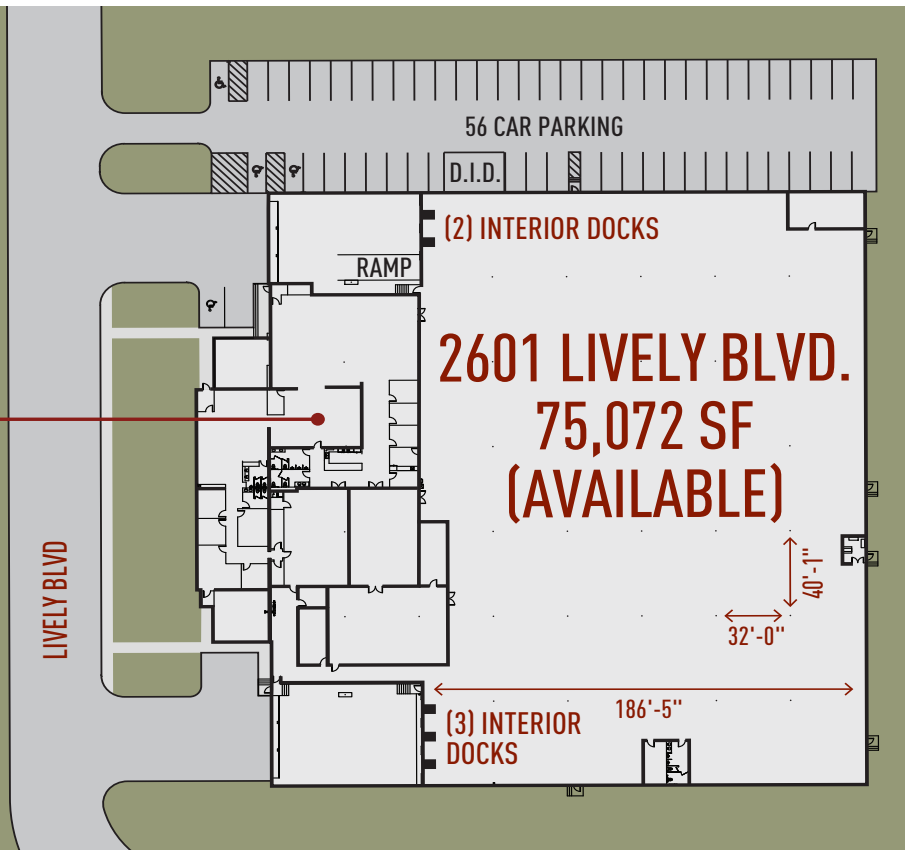
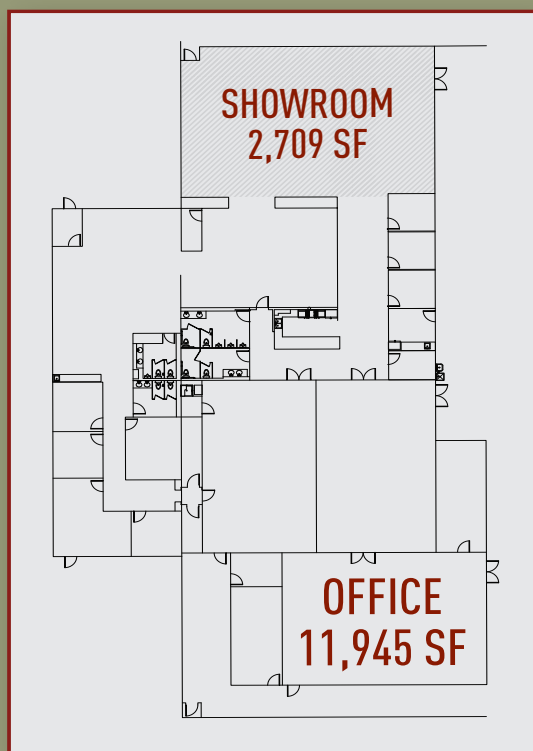
ML Realty Partners \ One Pierce Place, Suite 450, Itasca, Illinois 60143 \ 630-250-2900

Information contained herein is subject to change and verification, and no liability for errors or omissions is assumed. © 2022 All Rights Reserved. ML Realty Partners

2601 Lively Boulevard, Elk Grove Village, IL



Master Plan Rendering



ML REALTY
PARTNERS

NORTH ↑

ML Realty Partners \ One Pierce Place, Suite 450, Itasca, Illinois 60143 \ 630-250-2900

Information contained herein is subject to change and verification, and no liability for errors or omissions is assumed. © 2022 All Rights Reserved. ML Realty Partners