

FOR LEASE | 2046 - 2060 W. LAKE ST CHICAGO, IL 60612

TWO INDUSTRIAL BUILDINGS AVAILABLE | 5,000 - 12,200 SF

BUILDINGS MAY BE LEASED TOGETHER OR SEPARATE

2060 W. LAKE ST
5,000 SF

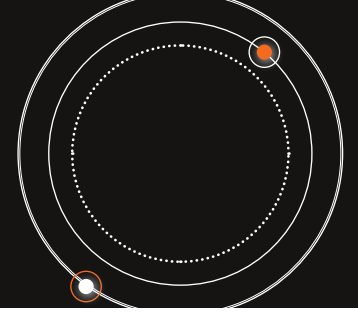
2046 W. LAKE ST
7,200 SF

SHARED LOT

- Lake Street Frontage
- Steps to New Green Line El Train Stop at Lake & Damen (estimated completion 2024)
- Quick access to Downtown Chicago, & highways I-90/I-94 & I-290
- 6,000 SF shared secured lot
- ± 2,000 SF freezer/cooler

2046-2060 W. LAKE ST | CHICAGO

PROPERTY DETAILS & HIGHLIGHTS



2060 W. Lake St

Building Size: 5,000 SF

Warehouse: 4,301 SF

Office: 699 SF (plus additional 700 SF 2nd floor)

Loading: 2 Drive-in Doors (Drive-through to Hoyne)

Clear Height: 22 Feet

Power: 200 Amps / 120 / 240 Volts 3Phase

Parking: On-Site Parking: Shared secure lot

Street Parking: Available along N Hoyne Ave & W Walnut St

Zoning: PMD 4A

2046 W. Lake St

Building Size: 7,200 SF Total

Office: 1,497 SF Office

Warehouse: 5,700 SF - Includes Freezer/ Cooler: (2) ±1,000 SF Units

Loading: 2 Interior Loading Docks (21'-8" x 41'10")

Clear Height: 12 Feet

Power: 400 Amps / 120 / 240 Volts 3Phase

Parking: On-Site Parking: Shared secure lot

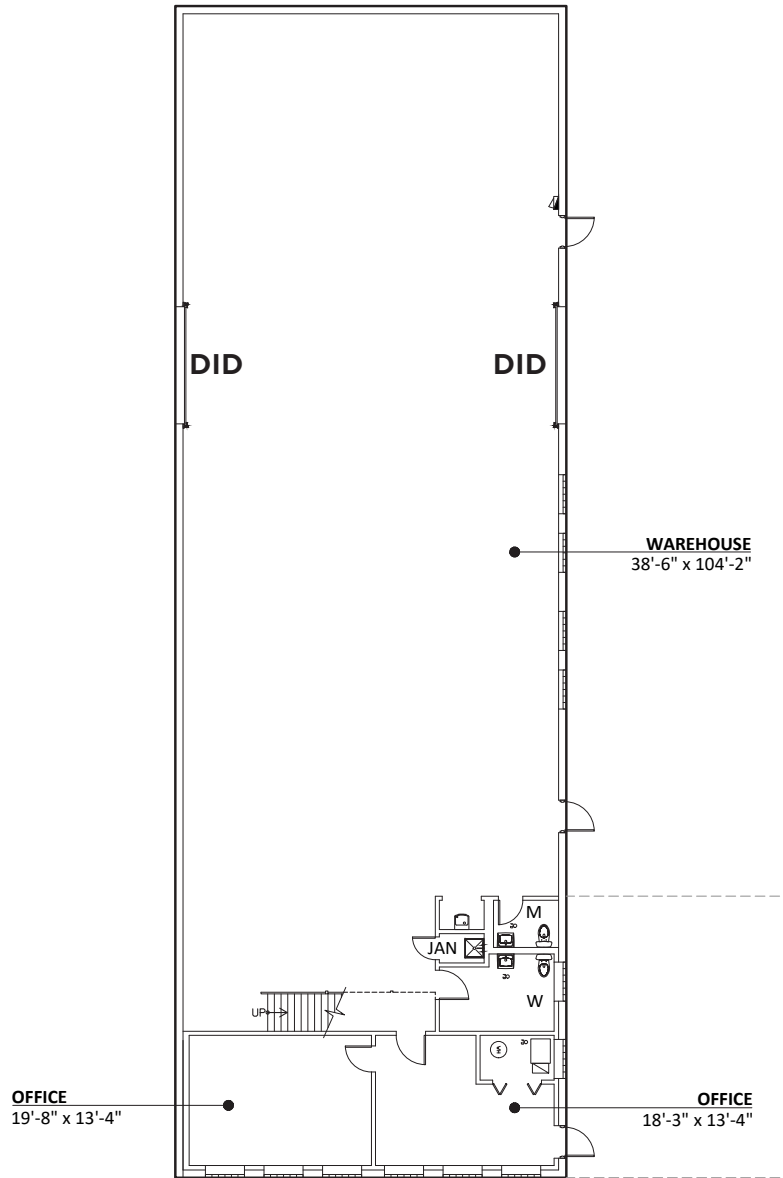
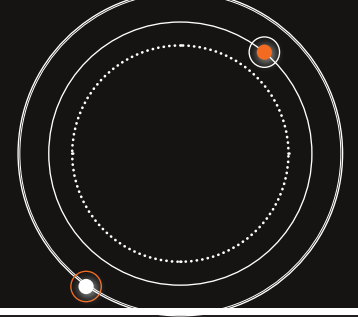
Street Parking: Available along N Hoyne Ave & W Walnut St

Zoning: PMD 4A

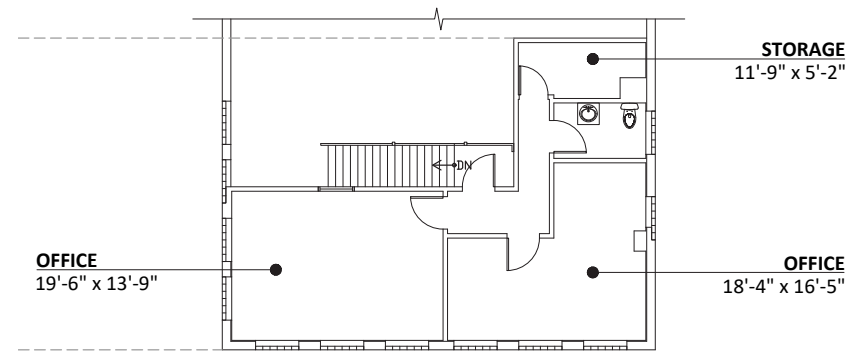
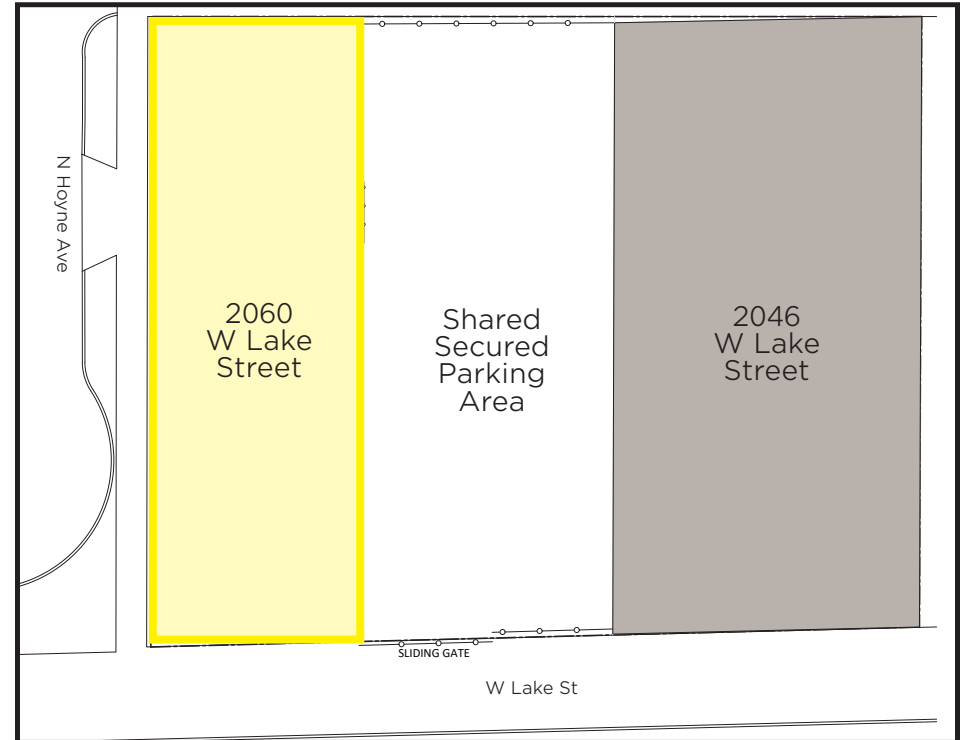


2060 W. LAKE STREET

FLOOR PLANS



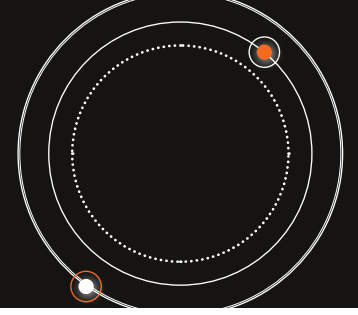
1ST FLOOR



2ND FLOOR

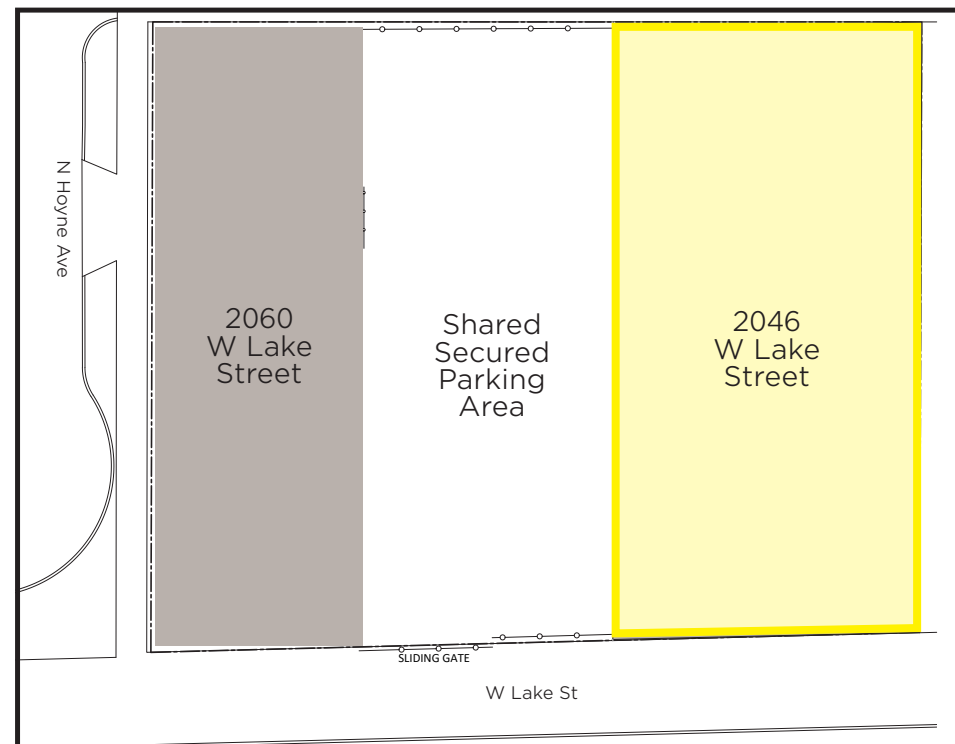
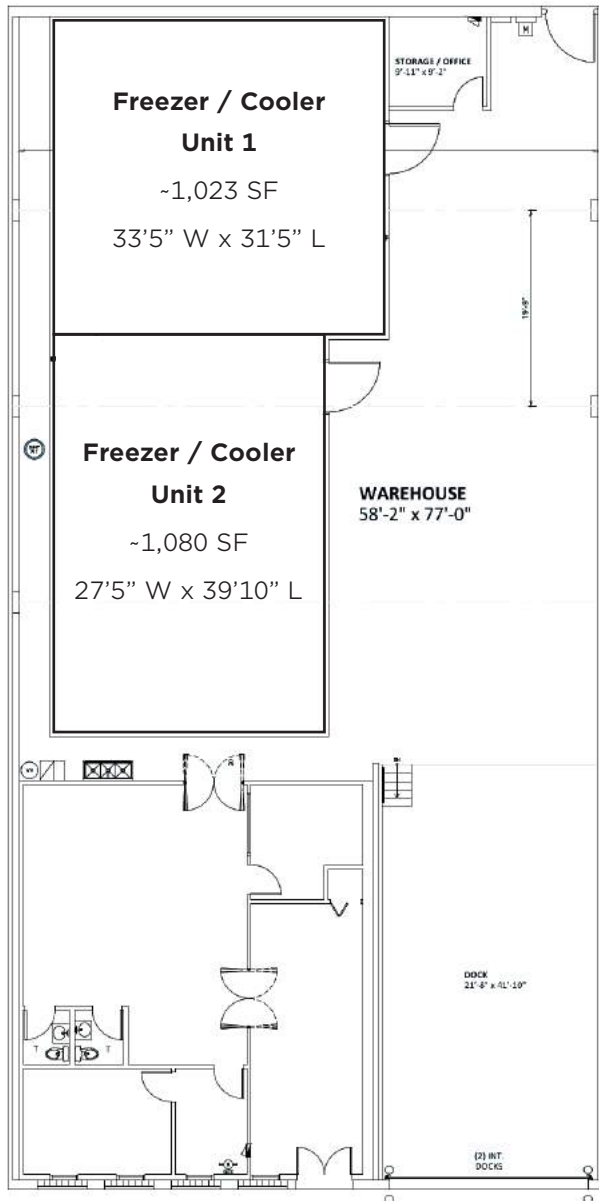
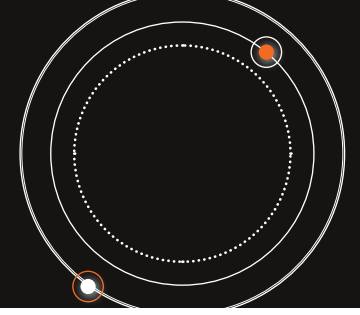
2060 W. LAKE STREET

INTERIOR PHOTOS



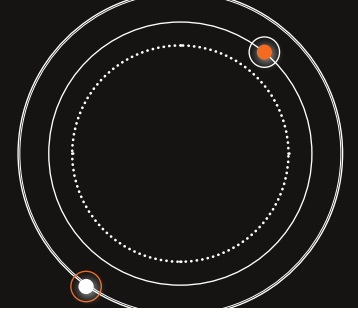
2046 W. LAKE STREET

FLOOR PLANS



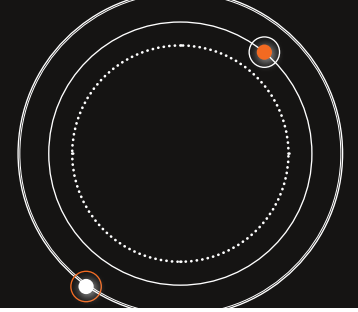
2046-2060 W. LAKE STREET

EXTERIOR PHOTOS



2046-2060 W. LAKE STREET

LOCATION MAP



ACCESS MAP



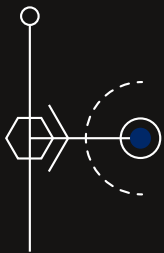


ML REALTY
PARTNERS

SEAN SLOAN, J.D.
312-399-2245
sean.sloan@svn.com

SVN® Chicago Industrial
10275 W Higgins Road, Suite 480
Rosemont, IL 60018

www.svnchicago.com



Collective Strength.
Accelerated Growth.

