

FOR LEASE | 2046 W. LAKE ST CHICAGO, IL 60612

7,200 SF INDUSTRIAL BUILDING WITH SHARED LOT



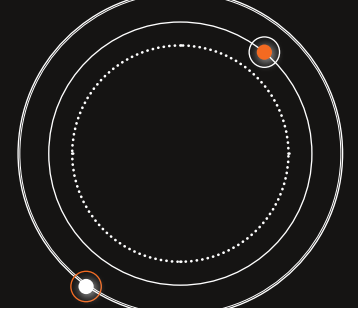
2046 W. LAKE ST
7,200 SF

SHARED LOT

- Lake Street Frontage
- Steps to New Green Line El Train Stop at Lake & Damen (estimated completion 2024)
- Quick access to Downtown Chicago, & highways I-90/I-94 & I-290
- 6,000 SF shared secured lot
- ± 2,000 SF freezer/cooler

2046 W. LAKE STREET | CHICAGO

PROPERTY DETAILS & HIGHLIGHTS



2046 W. Lake St

Building Size: 7,200 SF Total

Office: 1,497 SF Office

Warehouse: 5,700 SF - Includes Freezer/ Cooler: (2) ±1,000 SF Units

Loading: 2 Interior Loading Docks (21'-8" x 41'10")

Clear Height: 12 Feet

Power: 400 Amps / 120 / 240 Volts 3Phase

Parking: On-Site Parking: Shared secure lot

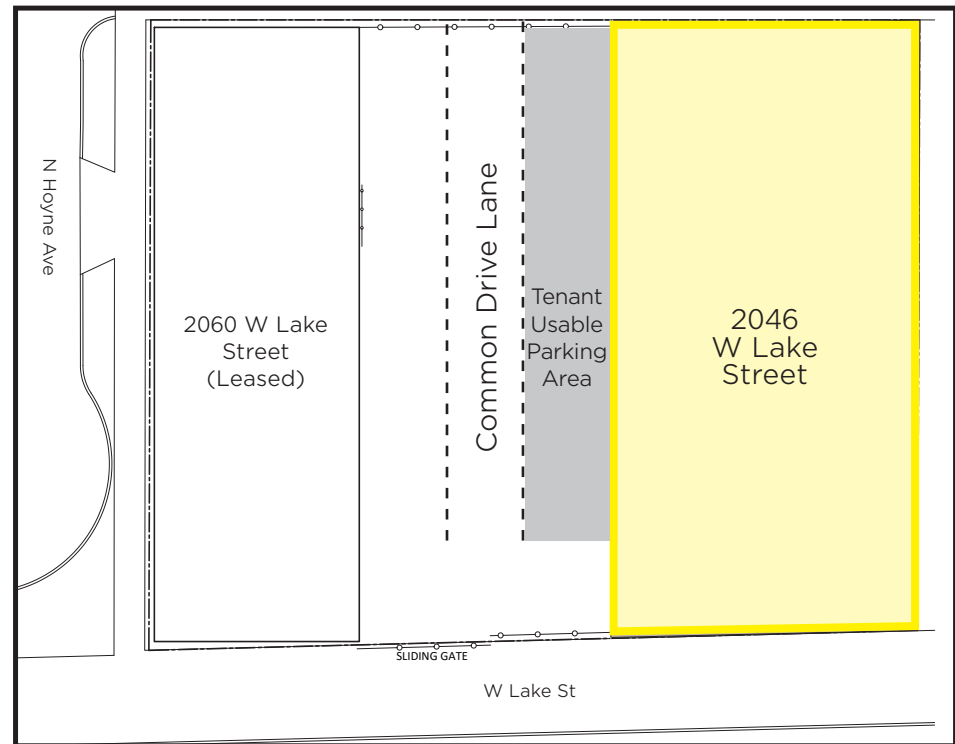
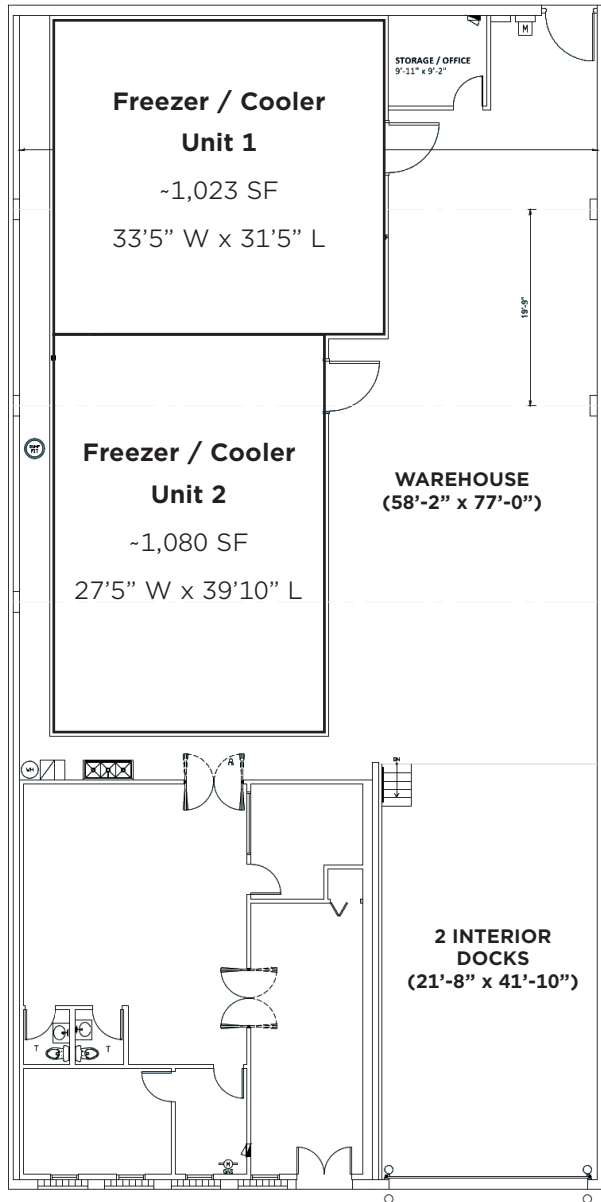
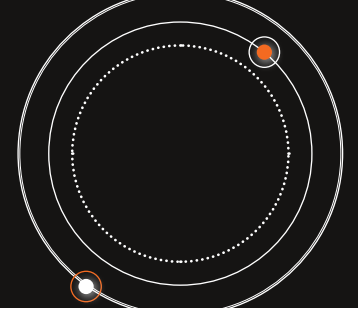
Street Parking: Available along N Hoyne Ave & W Walnut St

Zoning: PMD 4A

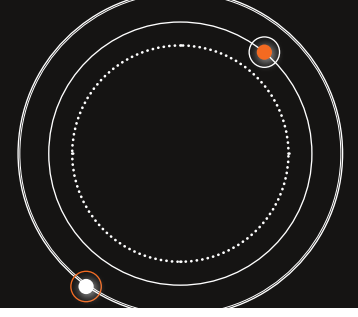


2046 W. LAKE STREET

FLOOR PLANS

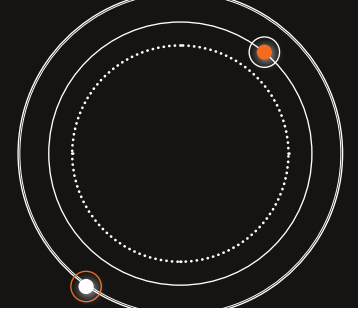


2046 W. LAKE STREET EXTERIOR PHOTOS



2046 W. LAKE STREET

LOCATION MAP



ACCESS MAP

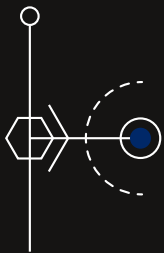




SEAN SLOAN, J.D.
312-399-2245
sean.sloan@svn.com

SVN[®] Chicago Industrial
10275 W Higgins Road, Suite 480
Rosemont, IL 60018

www.svnchicago.com



Collective Strength.
Accelerated Growth.

