

Lakeview Drive  
Romeoville, IL



ML REALTY  
PARTNERS



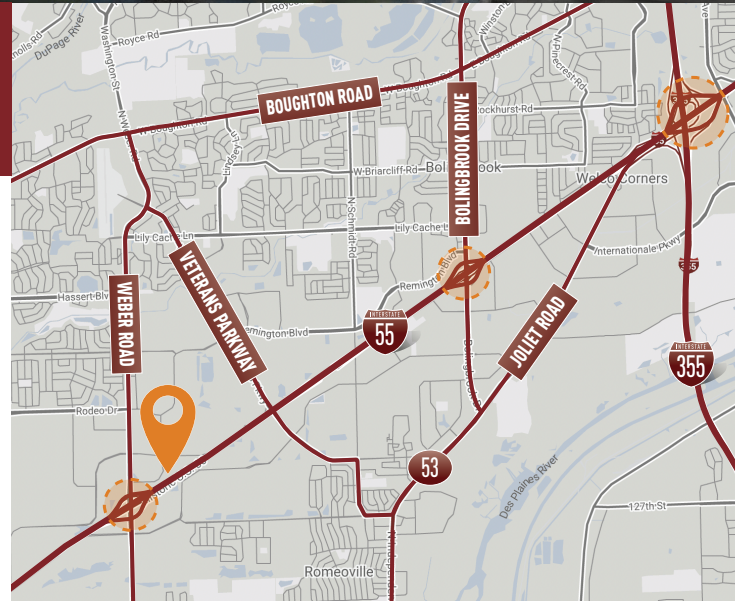
± 134,000 SF AVAILABLE

### Building Specifications

Building Size:	± 134,000 SF
Available:	± 67,000 SF - ± 134,000 SF
Office:	Build-to-Suit
Clear Height:	32' Clear
Loading:	± 25 Exterior Truck Docks
Drive In Doors:	± 2
Car Parking:	± 160 Spaces
Sprinkler:	ESFR

### Building Features

- › Minutes to I-55 via a 4-way interchange at Weber Road
- › Ability to secure truck court
- › Free-standing
- › Low Will County taxes
- › **New construction**
- › Frontage along Interstate 55
  - Over 111,000 vehicles per day
- › Ability to demise to ± 67,000 SF



For More Information Contact



LEE &  
ASSOCIATES

COMMERCIAL REAL ESTATE SERVICES

#### JEFF GALANTE

773-355-3007

jpgalante@lee-associates.com

#### TERRY GRAPENTHIN

773-355-3042

tgrape@lee-associates.com

#### RYAN EARLEY

773-355-3020

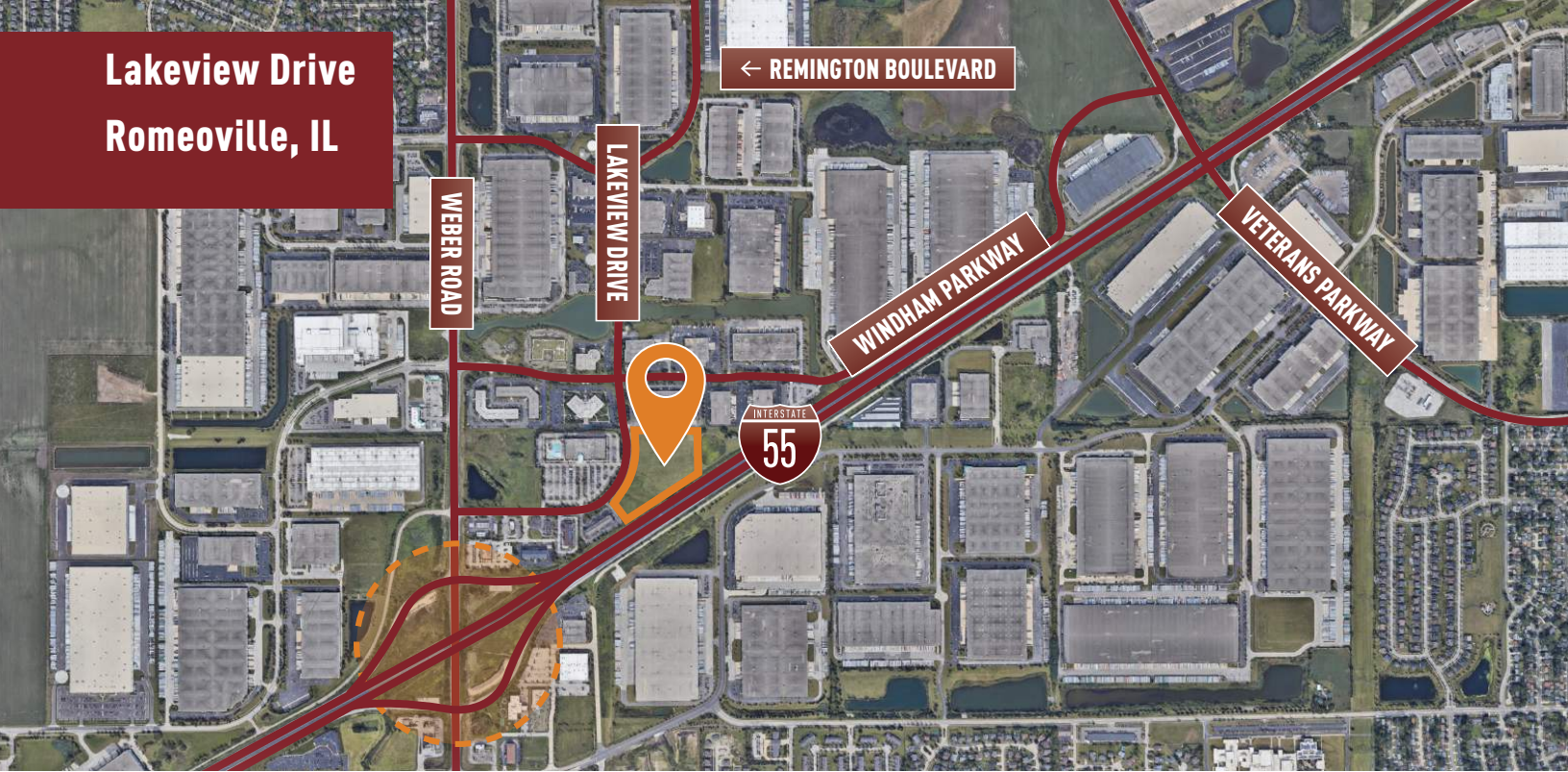
rearley@lee-associates.com

#### Owner:

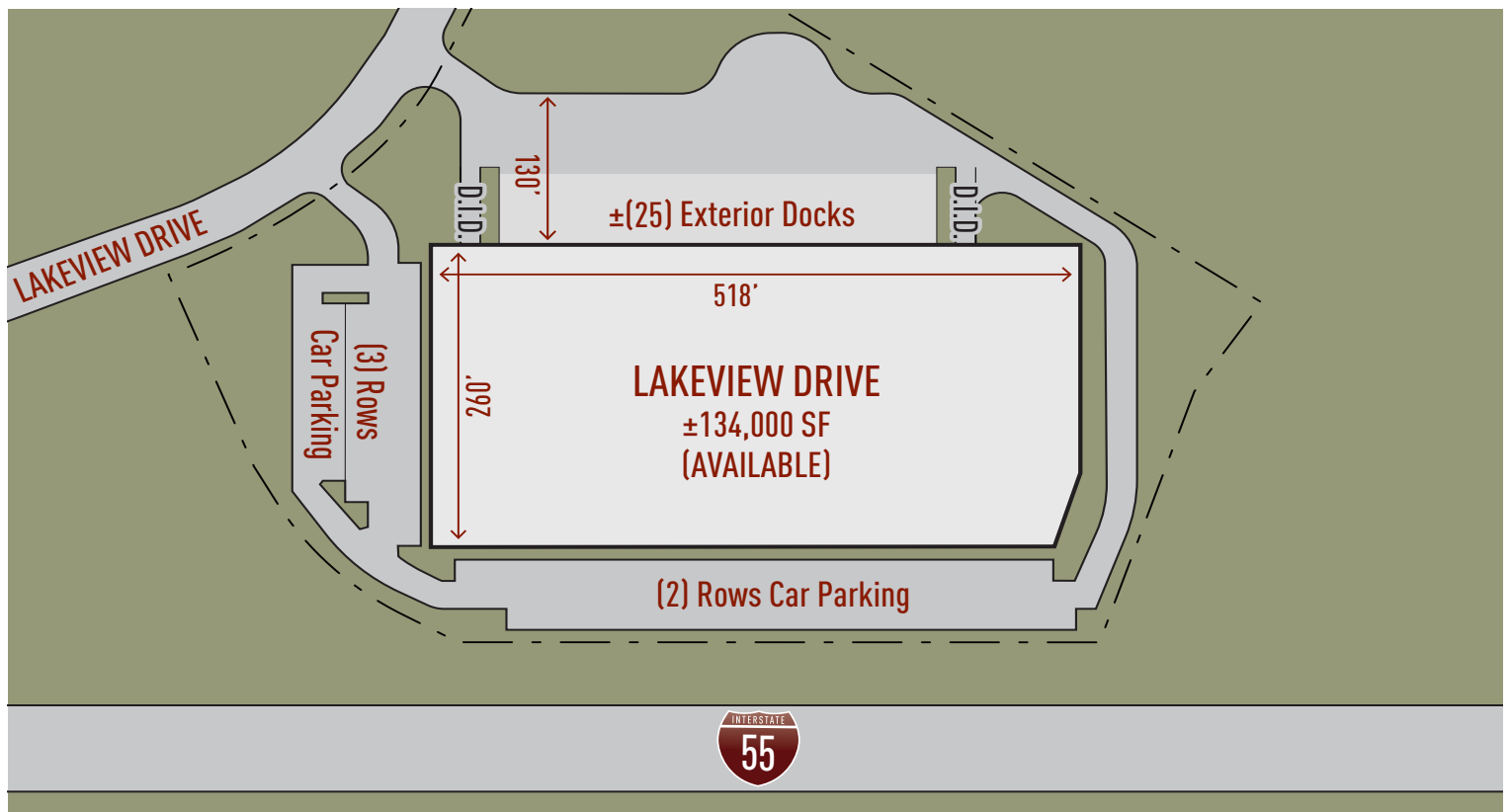
ML Realty Partners \ One Pierce Place, Suite 450, Itasca, Illinois 60143 \ 630-250-2900

Information contained herein is subject to change and verification, and no liability for errors or omissions is assumed. © 2022 All Rights Reserved. ML Realty Partners

# Lakeview Drive Romeoville, IL



## Master Plan Rendering



NORTH ↗