

1203 Lakeview Drive  
Romeoville, IL



ML REALTY  
PARTNERS

NEW CONSTRUCTION

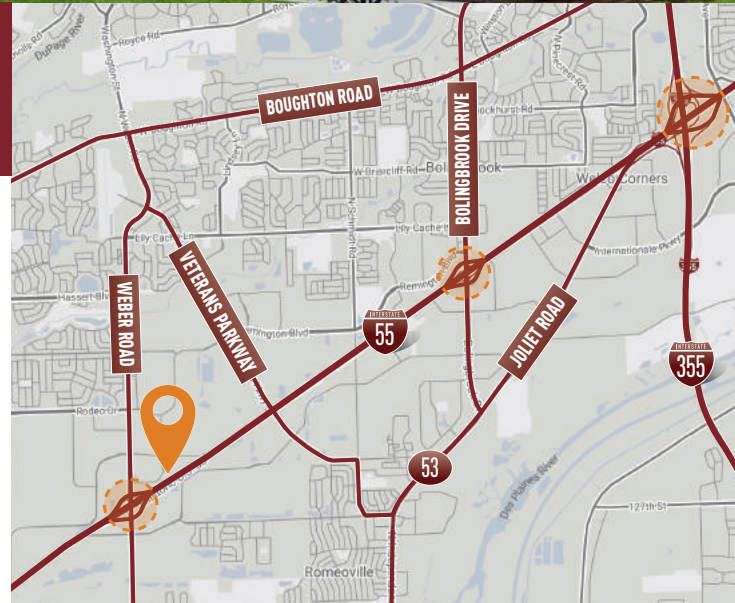
141,094 SF AVAILABLE

### Building Specifications

Building Size:	141,094 SF
Available:	± 70,000 SF - 141,094 SF
Office:	± 3,477 SF
Clear Height:	32' Clear
Loading:	25 Exterior Truck Docks
Drive In Doors:	2
Car Parking:	± 174 Spaces
Trailer Parking:	10 Stalls
Sprinkler:	ESFR
Power:	Up to 3,000 Amps

### Building Features

- › Immediate access to I-55 via Weber Road Interchange
- › Ability to secure truck court
- › Free-standing
- › Low Will County taxes
- › **New construction**
- › Frontage along Interstate 55
- › **On-site trailer parking**



For More Information Contact



LEE &  
ASSOCIATES

COMMERCIAL REAL ESTATE SERVICES

#### JEFF GALANTE

773-355-3007

jjgalante@lee-associates.com

#### TERRY GRAPENTHIN

773-355-3042

tgrape@lee-associates.com

#### RYAN EARLEY

773-355-3020

rearley@lee-associates.com

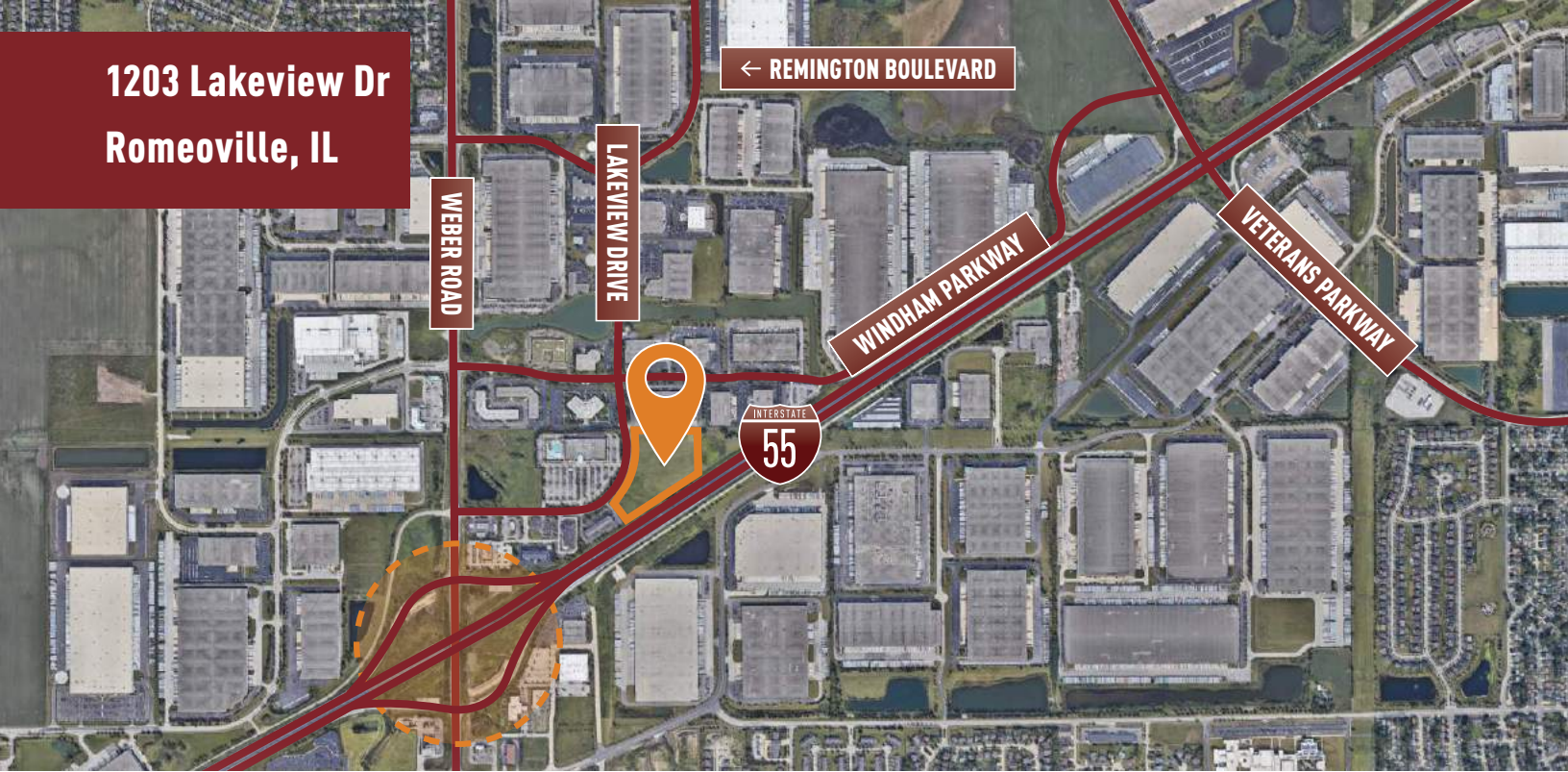
Owner:

ML Realty Partners \ One Pierce Place, Suite 450, Itasca, Illinois 60143 \ 630-250-2900

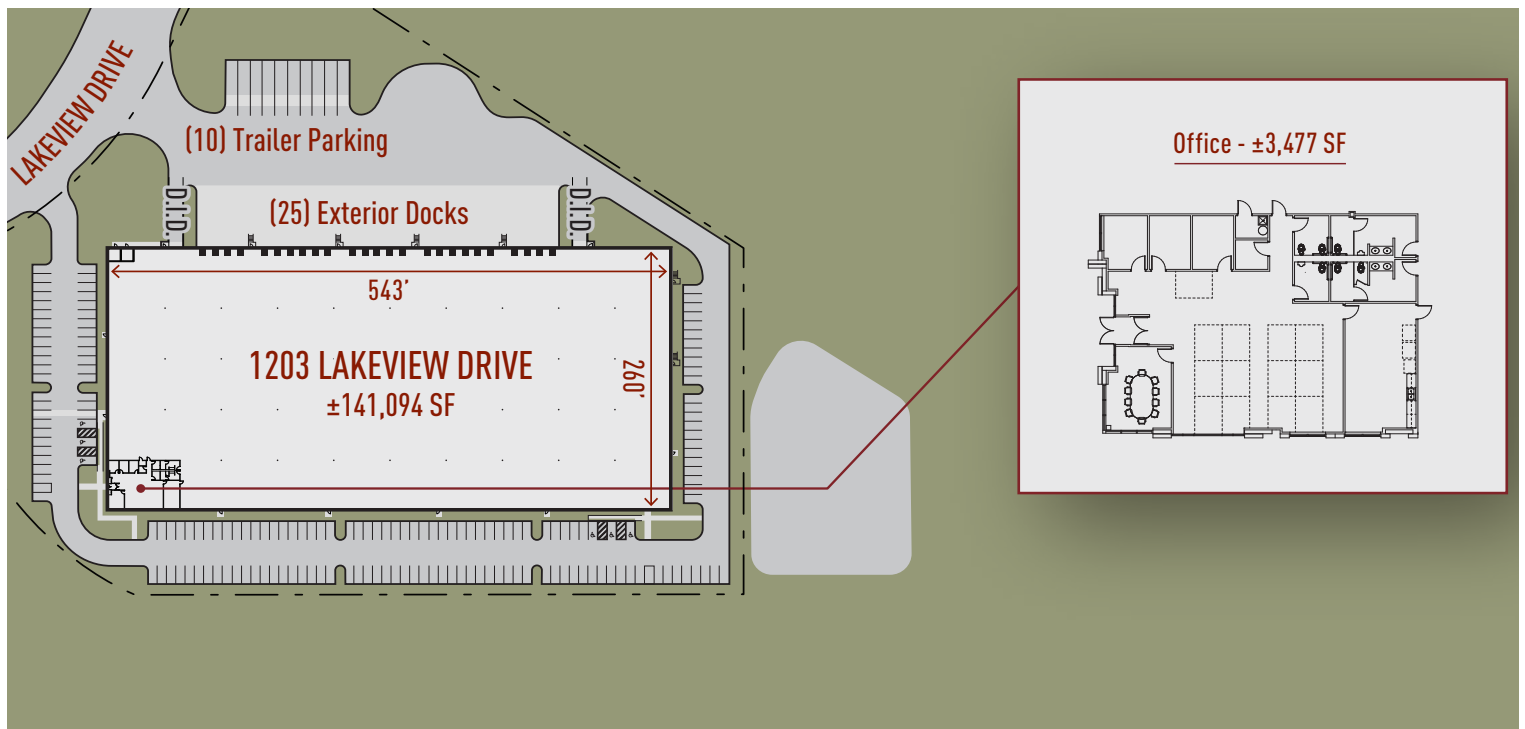
Information contained herein is subject to change and verification, and no liability for errors or omissions is assumed. © 2023 All Rights Reserved. ML Realty Partners



1203 Lakeview Dr  
Romeoville, IL



## Master Plan Rendering



NORTH ↗