

100 E. Crossroads Parkway,
Bolingbrook, IL - Suite E



ML REALTY
PARTNERS



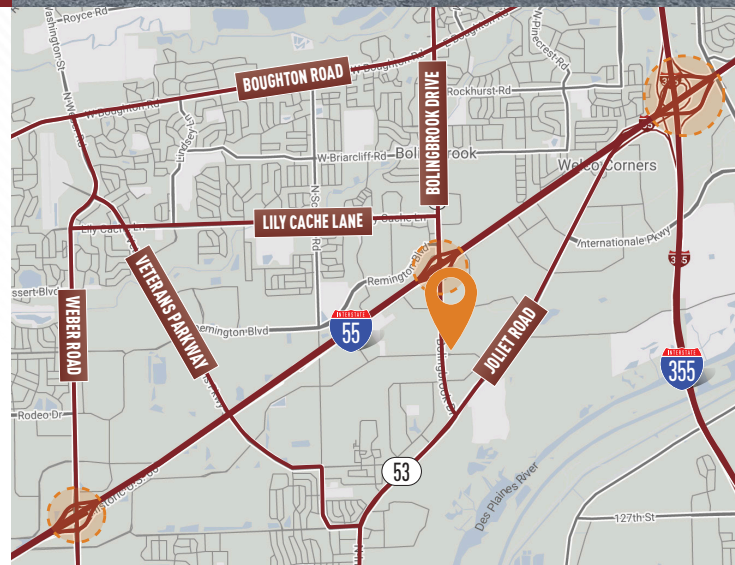
41,990 SF AVAILABLE

Building Specifications

Building Size:	101,634 SF
Available:	41,990 SF
Office:	17,636 SF
Clear Height:	30' Clear
Loading:	5 Exterior Docks
Drive In Doors:	3
Electric:	1200 Amps @ 480/277 Volts
Warehouse Lighting:	T5
Car Parking:	70
Column Spacing:	50' X 40'
Sprinkler System:	ESFR

Building Features

- › Immediate access to I-55 via a 4-way interchange at Bolingbrook Drive / Route 53
- › Low Will County taxes
- › Heavy power
- › High visibility along Bolingbrook Drive / Route 53



For More Information Contact



TERRY GRAPENTHIN
773-355-3042
tgrape@lee-associates.com

JEFF GALANTE
773-355-3007
jgalante@lee-associates.com

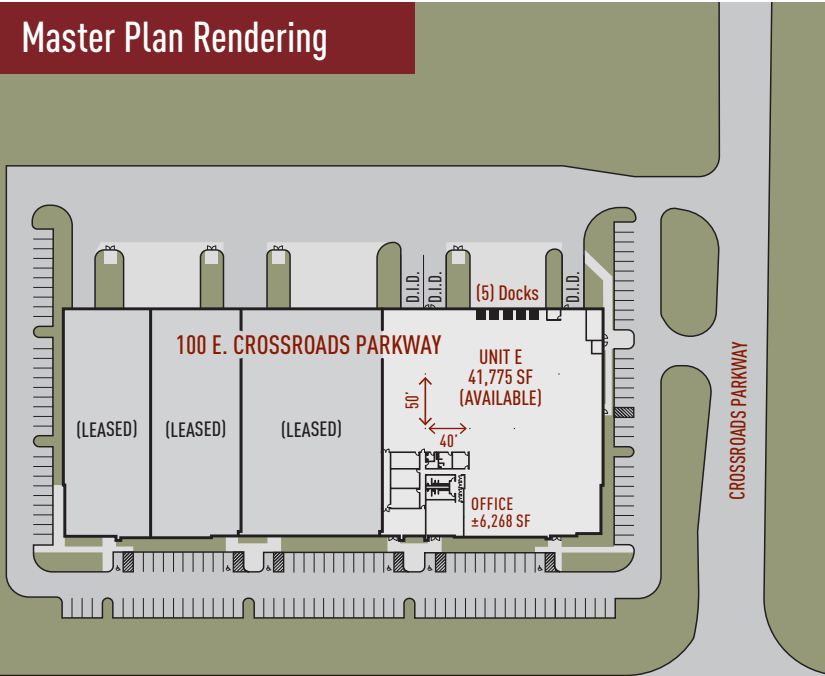
RYAN EARLEY
773-355-3020
rearley@lee-associates.com

Owner:
ML Realty Partners \\\ One Pierce Place, Suite 450, Itasca, Illinois 60143 \\\ 630-250-2900
Information contained herein is subject to change and verification, and no liability for errors or omissions is assumed. © 2025 All Rights Reserved. ML Realty Partners

**100 E. Crossroads Parkway,
Bolingbrook, IL - Suite E**

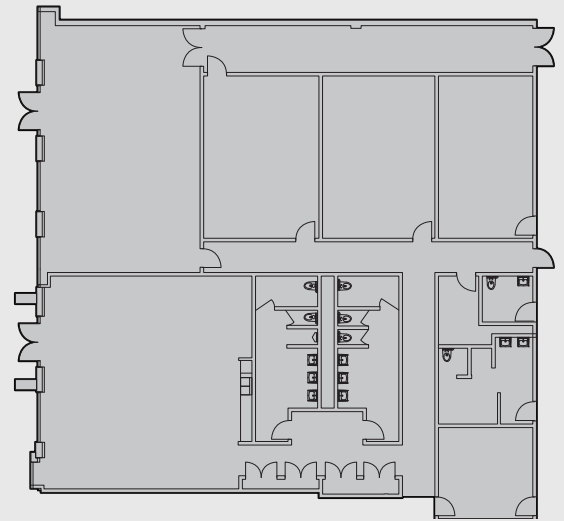


Master Plan Rendering



← NORTH

Conceptual Office Plan - 6,268 SF



← NORTH

