

7830 West 71st Street, Bridgeview, IL



ML REALTY  
PARTNERS

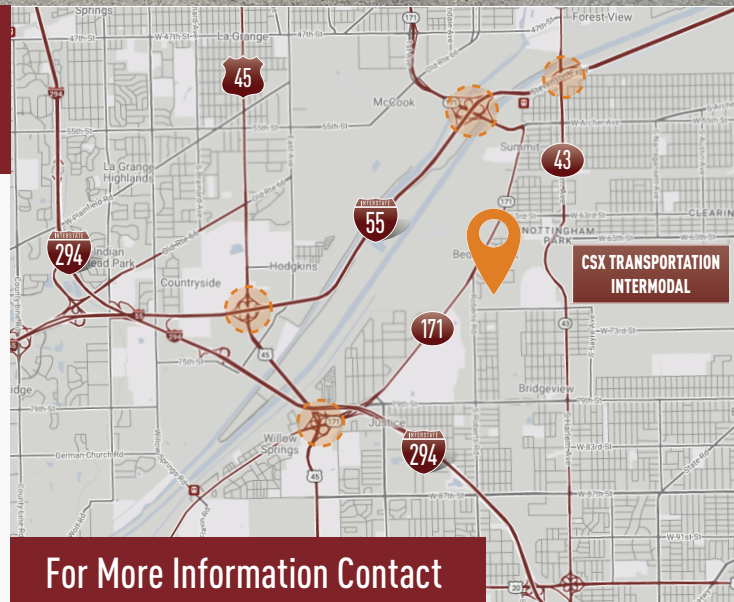
±184,017 SF AVAILABLE

### Building Specifications

Building Size:	217,873 SF
Available:	184,017 SF
Existing Office:	16,706 SF
Clear Height:	22' Clear
Loading:	21 Exterior Truck Docks
Drive In Doors:	1
Column Spacing:	39' X 40' Typical
Power:	8,000 Amps, 277/480 Volts, 3-Phase (Two 4,000 Amp Services)
Car Parking:	±124 Spaces
Trailer Parking:	39
Warehouse Sprinkler:	ESFR
Office Sprinkler:	Wet

### Building Features

- › On-site trailer parking available
- › Great manufacturing facility with heavy power
- › Quick access to I-55 and I-294
- › Proximity to rail yards
  - BNSF - Willow Springs
  - BNSF - Corwith
  - CSX - Bedford Park



For More Information Contact

**NAI Hiffman**  
Commercial Real Estate Services, Worldwide

**HIFFMAN**  
NATIONAL

**STEVE CONNOLLY, SIOR**  
630-693-0642  
sconnolly@hiffman.com

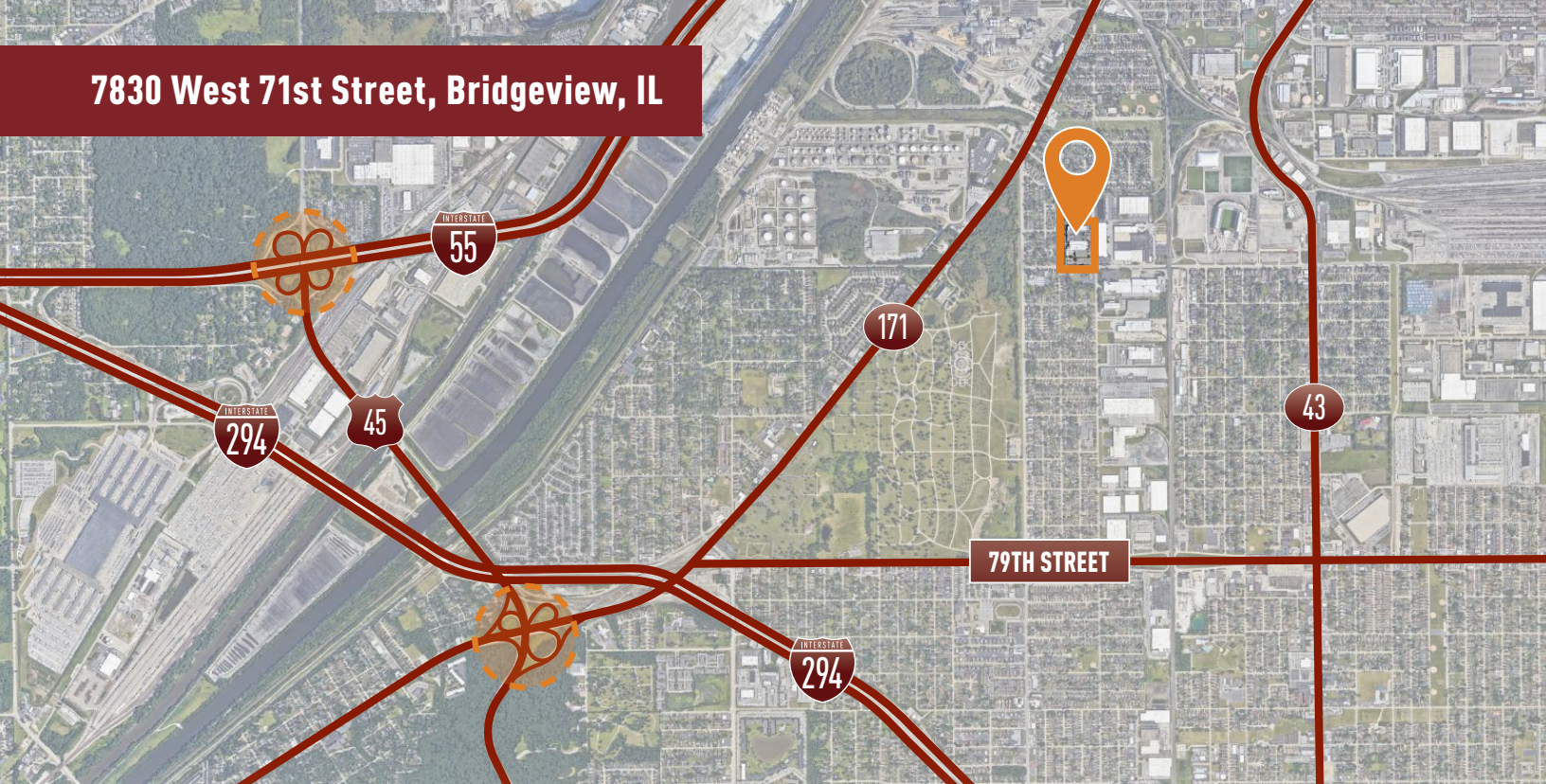
**CHRIS GARY**  
630-639-0694  
cgary@hiffman.com

**JACK PAPPAS**  
630-317-0775  
jpappas@hiffman.com

Owner:  
ML Realty Partners \\\ One Pierce Place, Suite 450, Itasca, Illinois 60143 \\\ 630-250-2900  
Information contained herein is subject to change and verification, and no liability for errors or omissions is assumed. © 2023 All Rights Reserved. ML Realty Partners

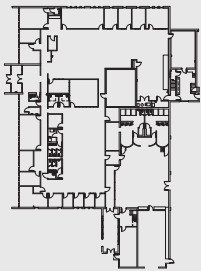


# 7830 West 71st Street, Bridgeview, IL



## Plan

Office - 16,706 SF



WEST 71ST STREET

GATE

7830 WEST 71ST STREET  
184,017 SF  
(AVAILABLE)

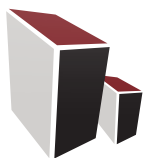
(LEASED)  
(LEASED)

(LEASED)

(21) Exterior Docks

(39) Trailer Parking

NORTH →



ML REALTY  
PARTNERS

Owner:

ML Realty Partners \ One Pierce Place, Suite 450, Itasca, Illinois 60143 \ 630-250-2900

Information contained herein is subject to change and verification, and no liability for errors or omissions is assumed. © 2023 All Rights Reserved. ML Realty Partners