

**350 Lindsey Lane
Bolingbrook, IL**



**ML REALTY
PARTNERS**

NEW CONSTRUCTION



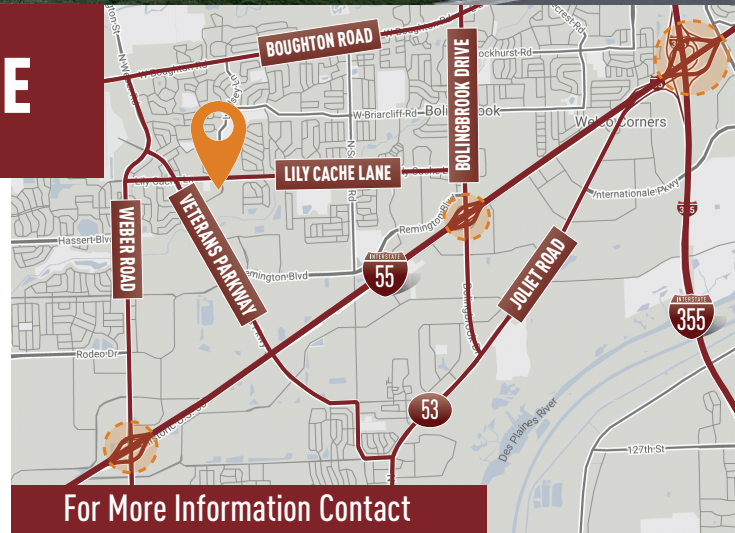
80,317 – 173,947 SF AVAILABLE

Building Specifications

- Building Size: 173,947 SF
- Available: 80,317-173,947 SF
- Office: 3,352 SF
- Clear Height: 36' Clear
- Loading: 36 Exterior Truck Docks
- Drive In Doors: 2
- Car Parking: 158 Spaces
- Sprinkler: ESFR
- Power: Up to 3000 Amps

Building Features

- › Minutes to I-55 via a 4-way interchange at Weber Road
- › Free-standing
- › Low Will County taxes
- › **New construction**



For More Information Contact



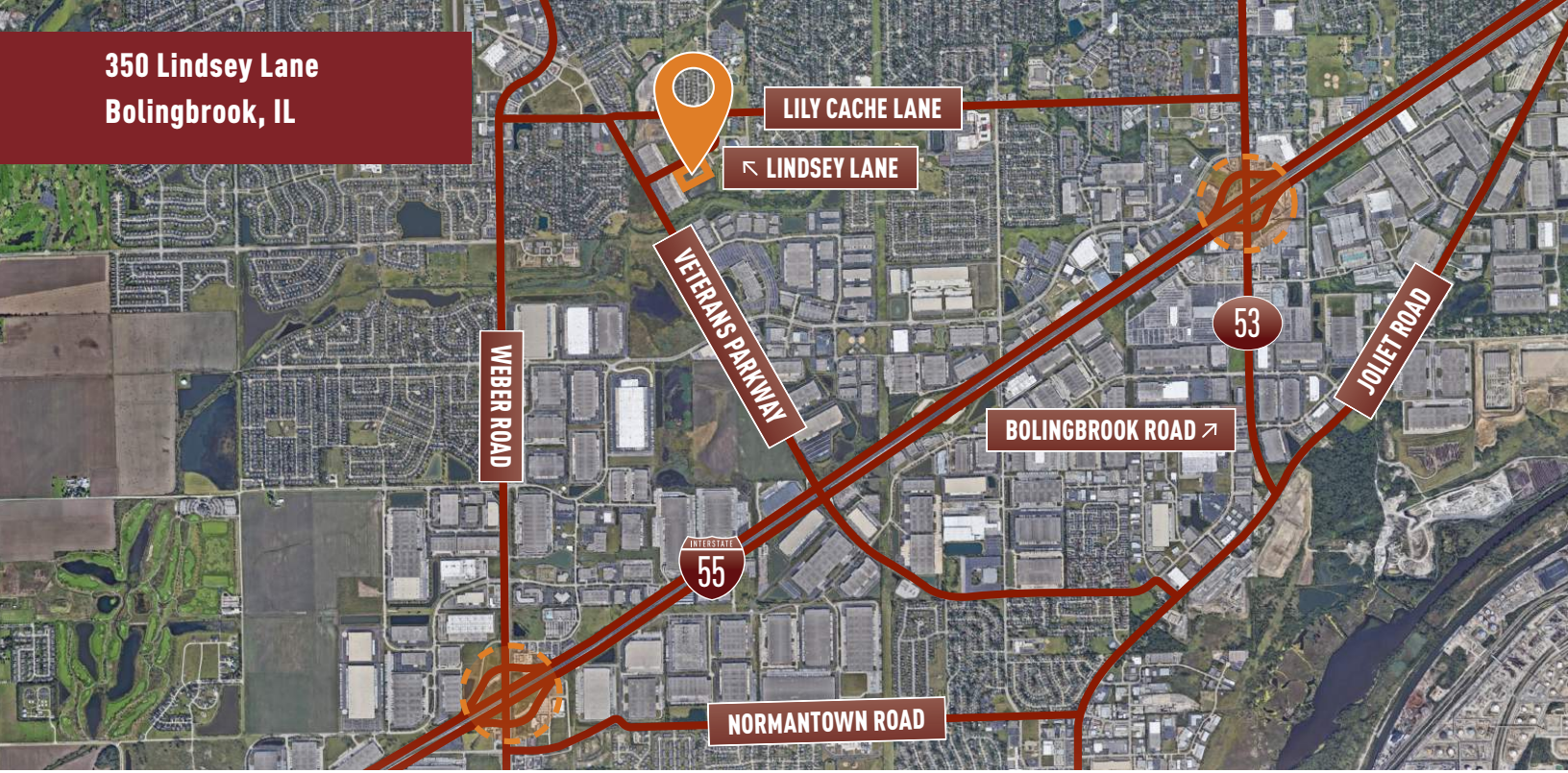
MATTHEW STAUBER
847-698-8236
matthew.stauber@colliers.com

MIKE SENNER
847-698-8234
mike.senner@colliers.com

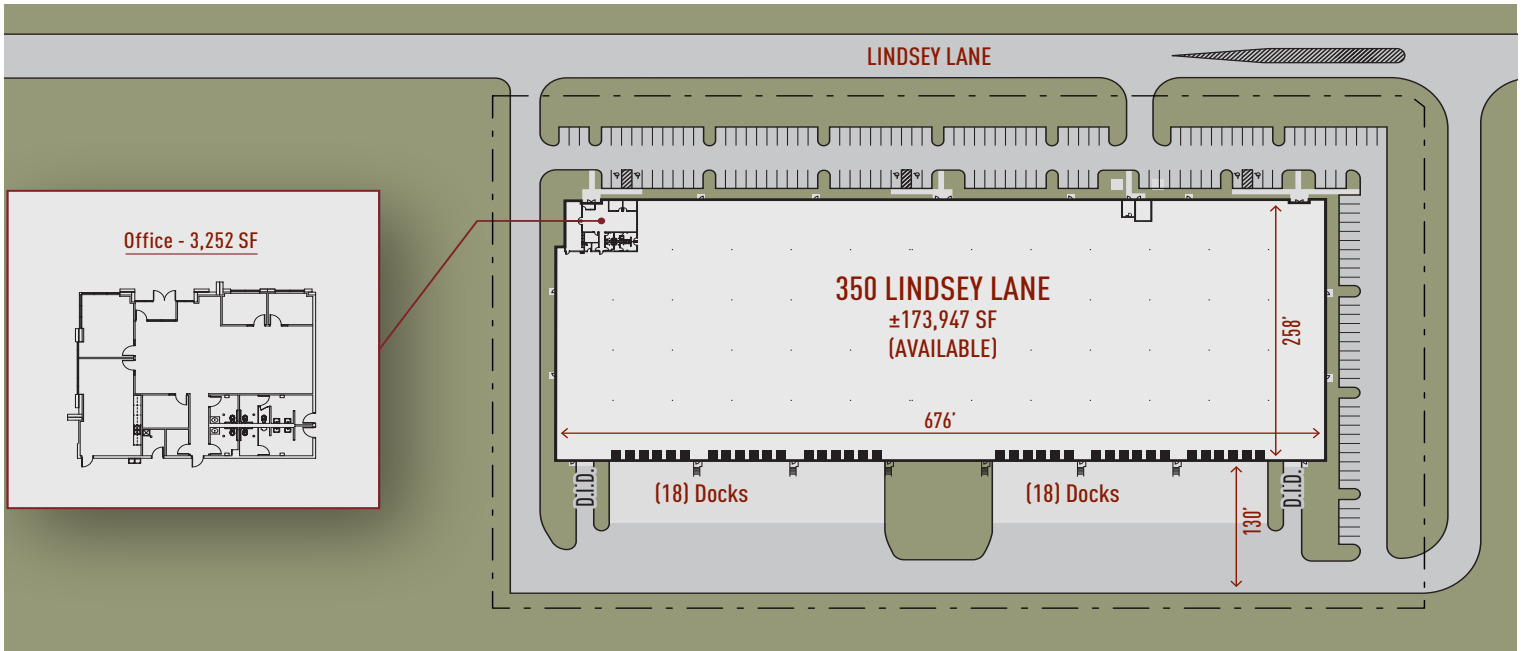
TOM RODENO
847-698-8231
tom.rodeno@colliers.com

Owner:
ML Realty Partners \ \ One Pierce Place, Suite 450, Itasca, Illinois 60143 \ \ 630-250-2900
Information contained herein is subject to change and verification, and no liability for errors or omissions is assumed. © 2024 All Rights Reserved. ML Realty Partners

350 Lindsey Lane
Bolingbrook, IL



Master Plan Rendering



NORTH ↑