

**350 Lindsey Lane  
Bolingbrook, IL**



**ML REALTY  
PARTNERS**

**NEW CONSTRUCTION**



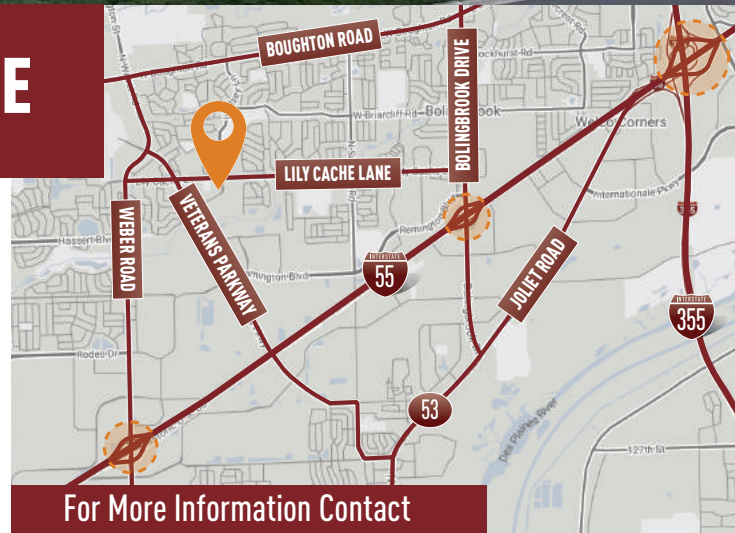
**80,317 – 173,947 SF AVAILABLE**

### Building Specifications

- Building Size: 173,947 SF
- Available: 80,317-173,947 SF
- Office: 3,252 SF
- Clear Height: 36' Clear
- Loading: 36 Exterior Truck Docks
- Drive In Doors: 2
- Car Parking: 158 Spaces
- Sprinkler: ESFR
- Power: Up to 3000 Amps

### Building Features

- › Minutes to I-55 via a 4-way interchange at Weber Road
- › Free-standing
- › Low Will County taxes
- › **New construction**



For More Information Contact



**MATTHEW STAUBER**  
847-698-8236  
matthew.stauber@colliers.com

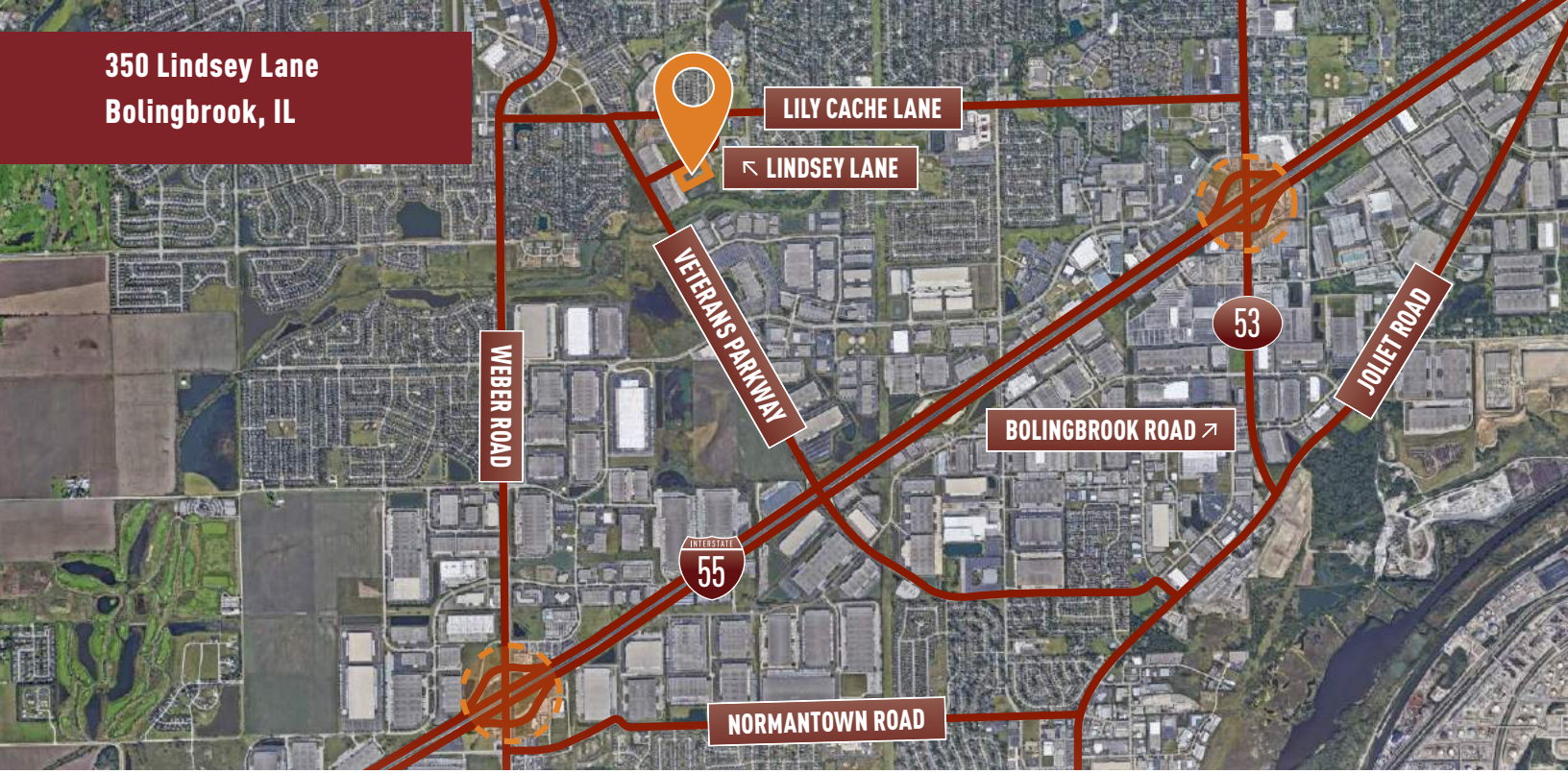
**MIKE SENNER**  
847-698-8234  
mike.senner@colliers.com

**TOM RODENO**  
847-698-8231  
tom.rodeno@colliers.com

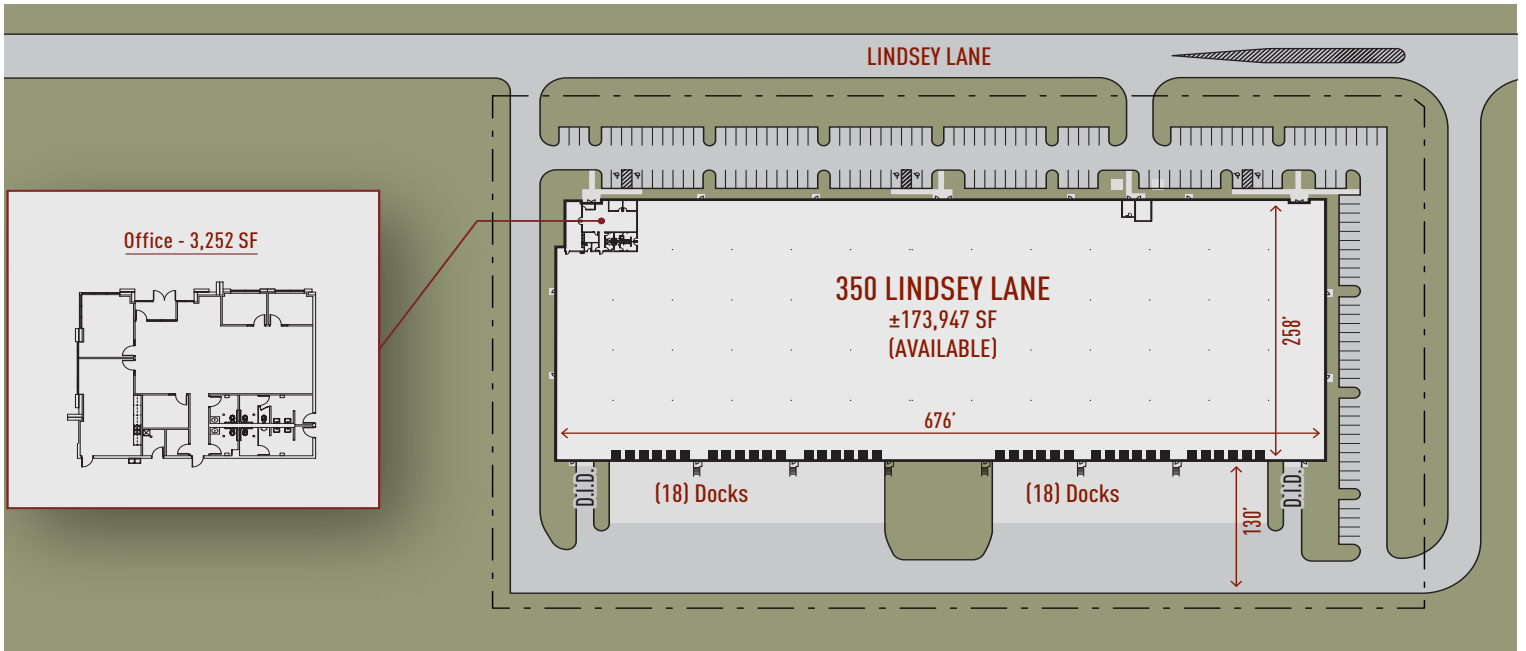
Owner:  
ML Realty Partners \ \ One Pierce Place, Suite 450, Itasca, Illinois 60143 \ \ 630-250-2900  
Information contained herein is subject to change and verification, and no liability for errors or omissions is assumed. © 2024 All Rights Reserved. ML Realty Partners



350 Lindsey Lane  
Bolingbrook, IL



### Master Plan Rendering



NORTH ↑