

2110 Wallace Way | Woodridge, IL

NEW CONSTRUCTION



ML REALTY
PARTNERS

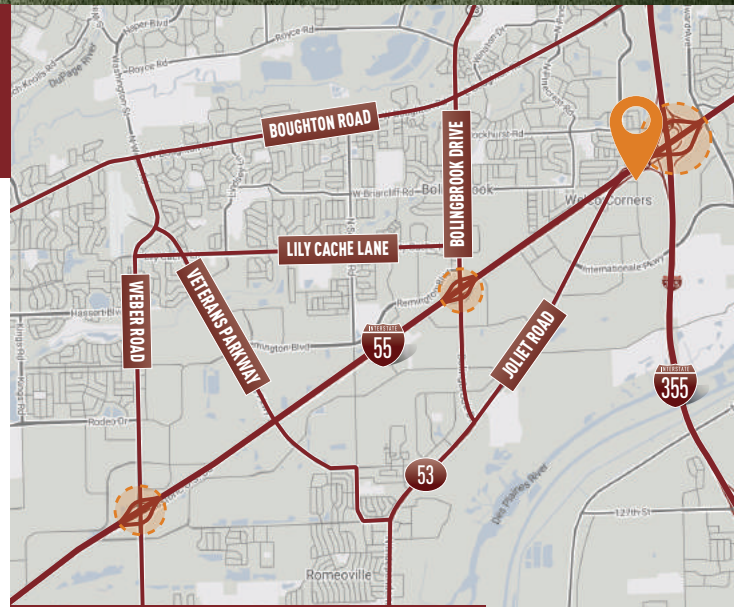
± 132,892 SF AVAILABLE

Building Specifications

Building Size:	± 132,892 SF
Available:	± 132,892 SF
Office:	Build-to-Suit
Clear Height:	32' Clear
Loading:	± 38 Exterior Truck Docks
Drive In Doors:	± 2
Sprinkler:	ESFR
Auto Parking:	± 133
Power:	Up to 3000 Amps

Building Features

- › One mile to I-55 and I-355
- › Free-standing
- › Low Will County taxes
- › **Premier visibility on I-55 and I-355**
- › Exposure to over 200,000 vehicles daily
- › **New construction**



For More Information Contact

NAHiffman
Commercial Real Estate Services, Worldwide

HIFFMAN
NATIONAL

DAN LEAHY
630-691-0604
dleahy@hiffman.com

JOHN WHITEHEAD
630-693-0643
jwhitehead@hiffman.com

MARK MORAN
630-693-0656
mmoran@hiffman.com

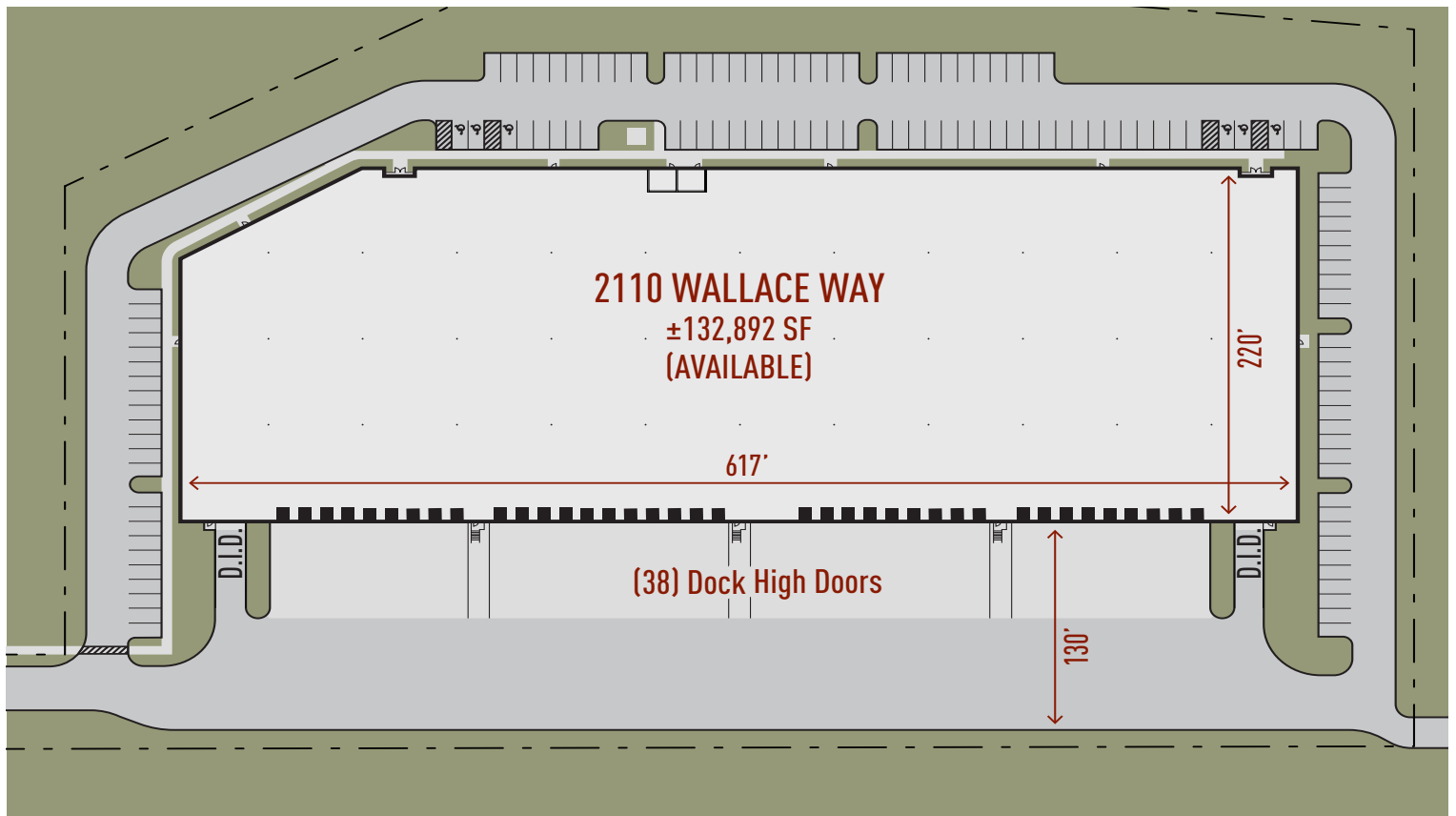
Owner:
ML Realty Partners \\\ One Pierce Place, Suite 450, Itasca, Illinois 60143 \\\ 630-250-2900
Information contained herein is subject to change and verification, and no liability for errors or omissions is assumed. © 2023 All Rights Reserved. ML Realty Partners

2110 Wallace Way | Woodridge, IL

- From I-355 / I-55 S
- To I-55 N
- To I-355 S
- To I-355 N



Master Plan Rendering



NORTH ↑