

175 E. Crossroads Parkway, Bolingbrook, Illinois - UNIT D



ML REALTY
PARTNERS



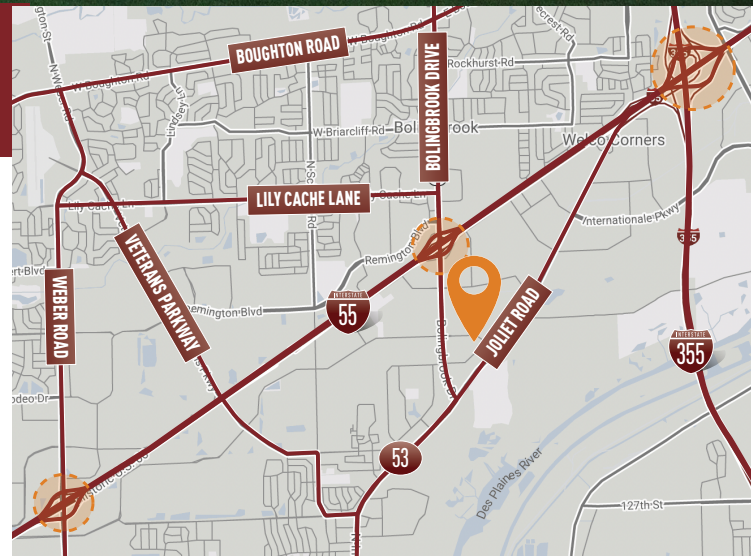
16,041 SF AVAILABLE

Building Specifications

Building Size:	102,936 SF
Available:	16,041 SF
Office:	7,416 SF
Clear Height:	28' Clear
Loading:	2 Exterior Docks w/ Levelers
Drive In Doors:	1 (12' X 14')
Electric:	400 Amps @ 277/480 Volts
Car Parking:	30
Column Spacing:	39' X 40'
Sprinkler System:	Wet

Building Features

- › Immediate access to I-55 via a 4-way interchange at Bolingbrook Drive / Route 53
- › Low Will County taxes
- › Heavy office with large meeting/training rooms



For More Information Contact



TERRY GRAPENTHIN

773-355-3042

tgrape@lee-associates.com

JEFF GALANTE

773-355-3007

jgalante@lee-associates.com

RYAN EARLEY

773-355-3020

rearley@lee-associates.com

Owner:

ML Realty Partners \ \ One Pierce Place, Suite 450, Itasca, Illinois 60143 \ \ 630-250-2900

Information contained herein is subject to change and verification, and no liability for errors or omissions is assumed. © 2023 All Rights Reserved. ML Realty Partners

175 E. Crossroads Parkway
Bolingbrook, Illinois - UNIT D

