

300 Union Bower Court, Irving TX - Suite 320



ML REALTY  
PARTNERS



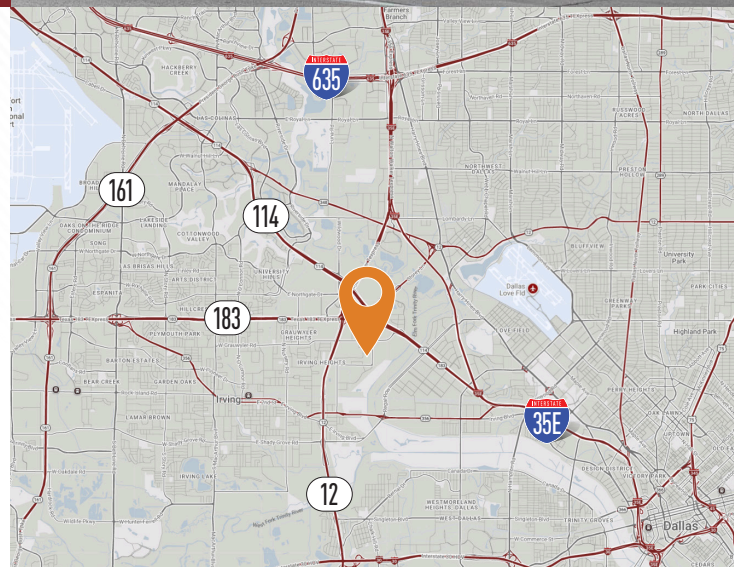
**23,760 SF AVAILABLE**

## Building Specifications

Building Size:	54,000 SF
Available:	23,760 SF
Office:	820 SF
Clear Height:	21' Clear
Column Spacing:	40' X 45'
Loading:	3 Dock High Doors
Drive-In Door:	1
Electric:	200 Amps, 240 Volts
Lighting:	LED
Sprinkler System:	Yes

## Building Features

- › Strategically located in the South Stemmons Corridor offering first-class image and environment
- › Easy access to Interstate 35E
- › Minutes from Loop 12 and Hwy 183



For More Information Contact



**ANDREW GILBERT**  
972-280-8312  
agilbert@hldallas.com

**KEATON BRICE**  
972-421-1956  
kbrice@hldallas.com

Owner:

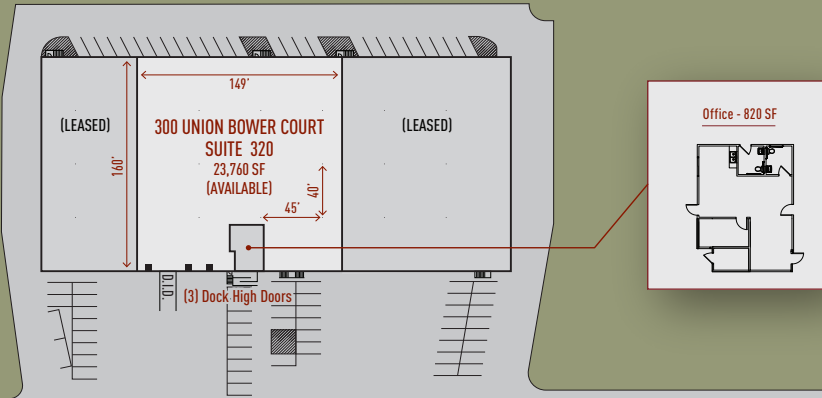
ML Realty Partners \ \ One Pierce Place, Suite 450, Itasca, Illinois 60143 \ \ 630-250-2900

Information contained herein is subject to change and verification, and no liability for errors or omissions is assumed. © 2025 All Rights Reserved. ML Realty Partners

# 300 Union Bower Court, Irving TX - Suite 320

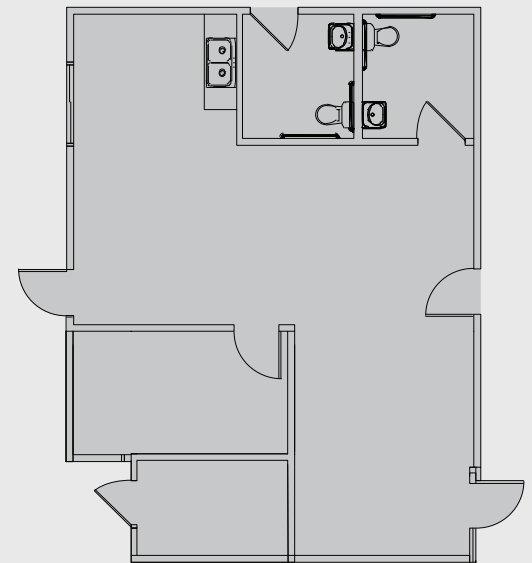


## Master Plan Rendering



NORTH →

## Full Office Build: Schematic Layout



NORTH →

