

CHICAGO, IL

2424 S. WABASH AVENUE



ML REALTY
PARTNERS

URBAN INDUSTRIAL PROPERTY
WITH SECURE ON SITE STORAGE LOT



±24,615 SF BUILDING

±1 ACRE SECURE LOT WITH
2,385 SF STORAGE BUILDING

AVAILABLE FOR LEASE IN
CHICAGO'S SOUTH LOOP



STATE STREET

WABASH AVENUE

CERMAK ROAD

LOCATION HIGHLIGHTS

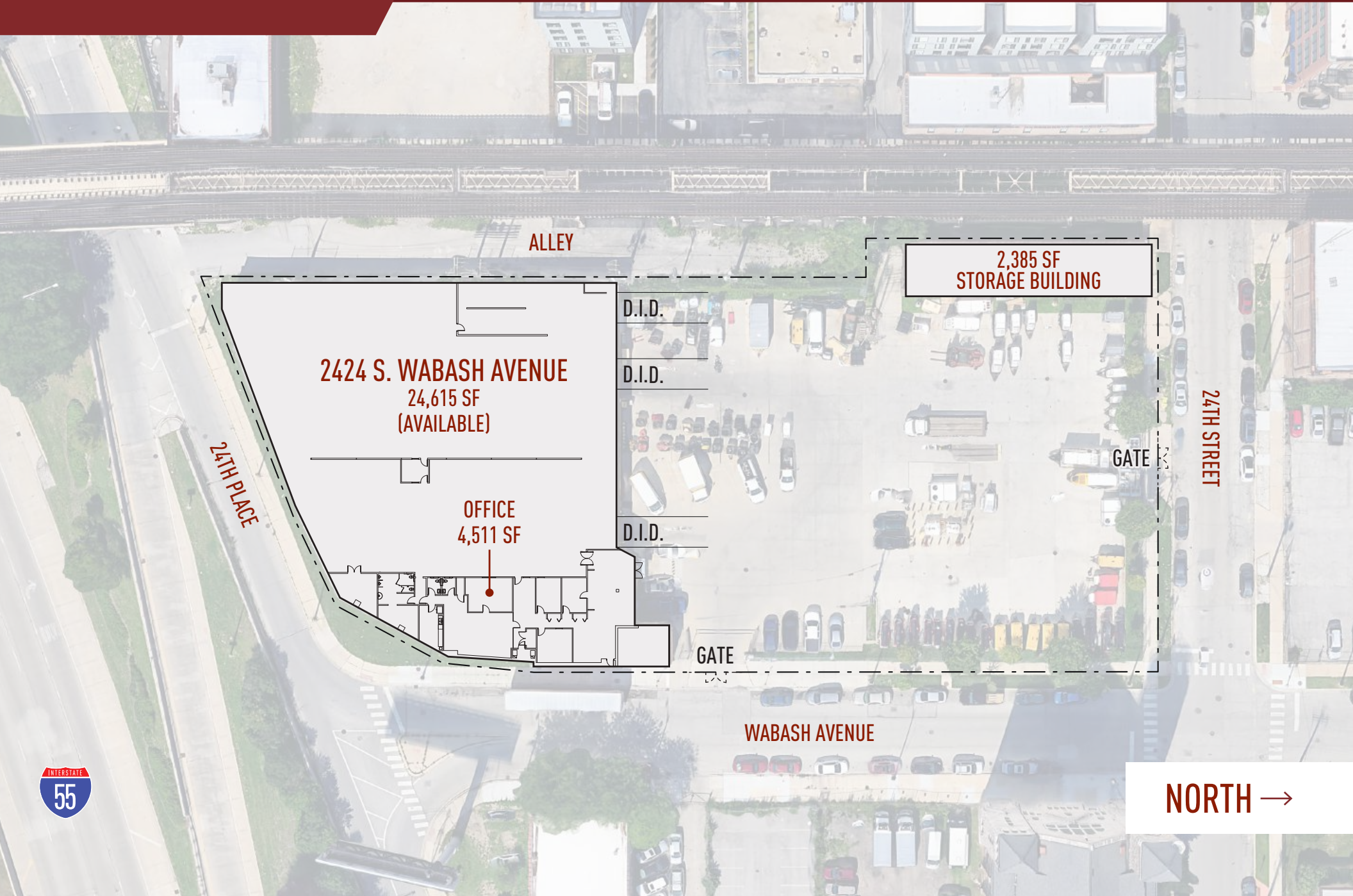
- ✓ IMMEDIATE ACCESS TO I-55
- ✓ TWO MILES SOUTH OF CHICAGO CENTRAL BUSINESS DISTRICT
- ✓ TWO BLOCKS WEST OF MCCORMICK PLACE CONVENTION CENTER
- ✓ ZONING: DS-3





BUILDING HIGHLIGHTS

SIZE	24,615 SF Main Building 2,385 SF Storage Building
CEILING HEIGHT	13'5" Clear
LOADING	3 Drive-in Doors
POWER	800 Amps, 120/240 Volts, 3-Phase
PARKING	±1 Acre Secure Lot with Concrete Surface and New LED Lighting



2424 S. WABASH AVENUE
24,615 SF
(AVAILABLE)

OFFICE
4,511 SF

2,385 SF
STORAGE BUILDING

24TH PLACE

ALLEY

D.I.D.

D.I.D.

D.I.D.

GATE

GATE

24TH STREET

WABASH AVENUE



NORTH →



- 3.2 MILES – 290 WEST
- 2.6 MILES – 90/94 WEST
- 2.7 MILES – 90/94 EAST
- 0.2 MILES – 55 SOUTH

6 | 2424 S. WABASH AVENUE

UNLOCK THE POTENTIAL OF A TRUE INFILL LOCATION





DARWINPW
R E A L T Y

CORFAC International

TERRY LYNCH, SIOR

773.714.2142

tlynch@darwinpw.com

EDWARD C. WABICK, SIOR

708.220.5539

ewabick@darwinpw.com

2424 S. WABASH AVENUE, CHICAGO, IL



ML REALTY
PARTNERS